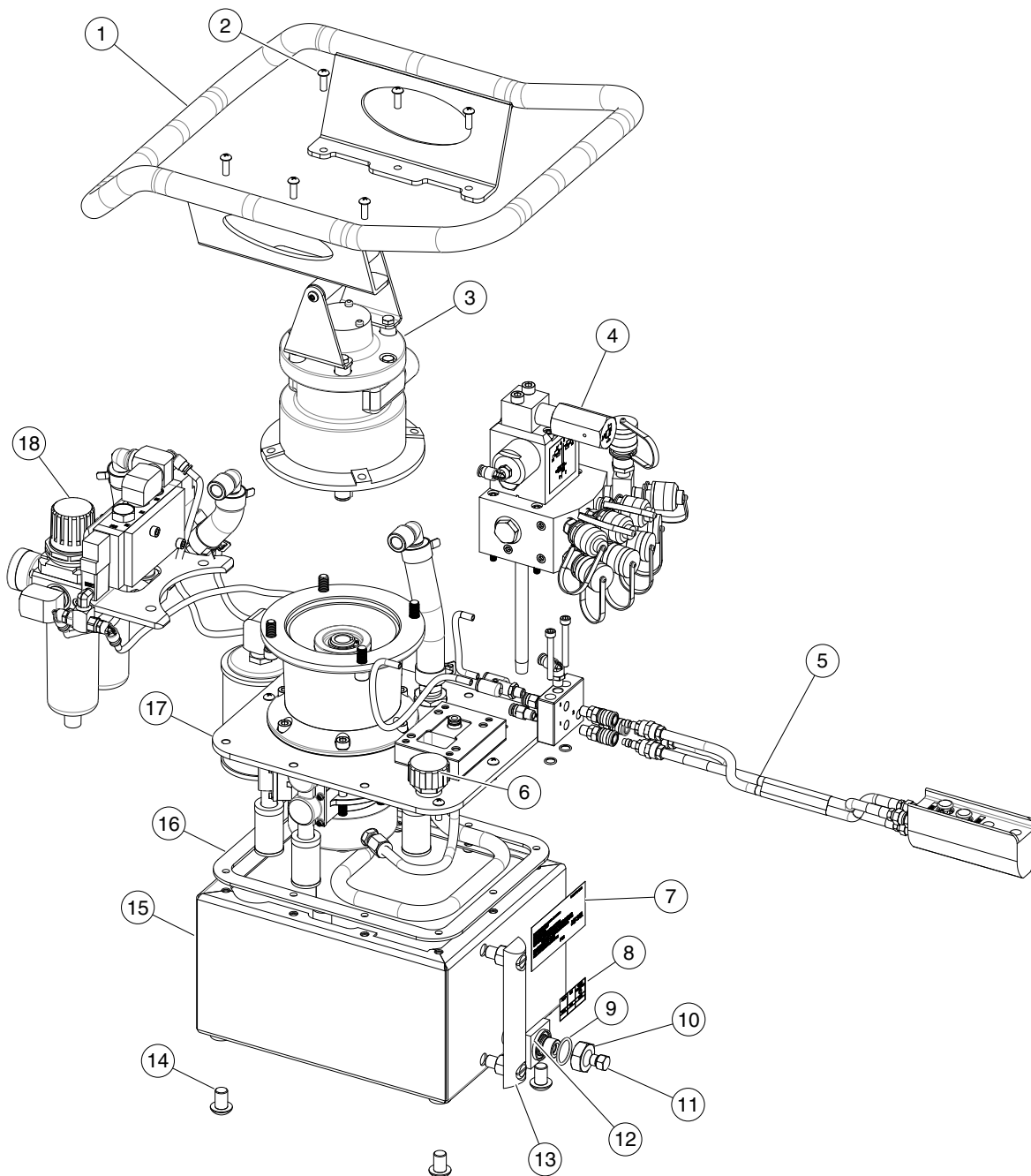


SPX Hydraulic Technologies
5885 11th Street
Rockford, IL 61109-3699 USA
powerteam.com

Tech. Services: (800) 477-8326
Fax: (800) 765-8326
Order Entry: (800) 541-1418
Fax: (800) 288-7031

PCHA60T3B0-C-HYTORC
PCHA60T3B0-C4-HYTORC

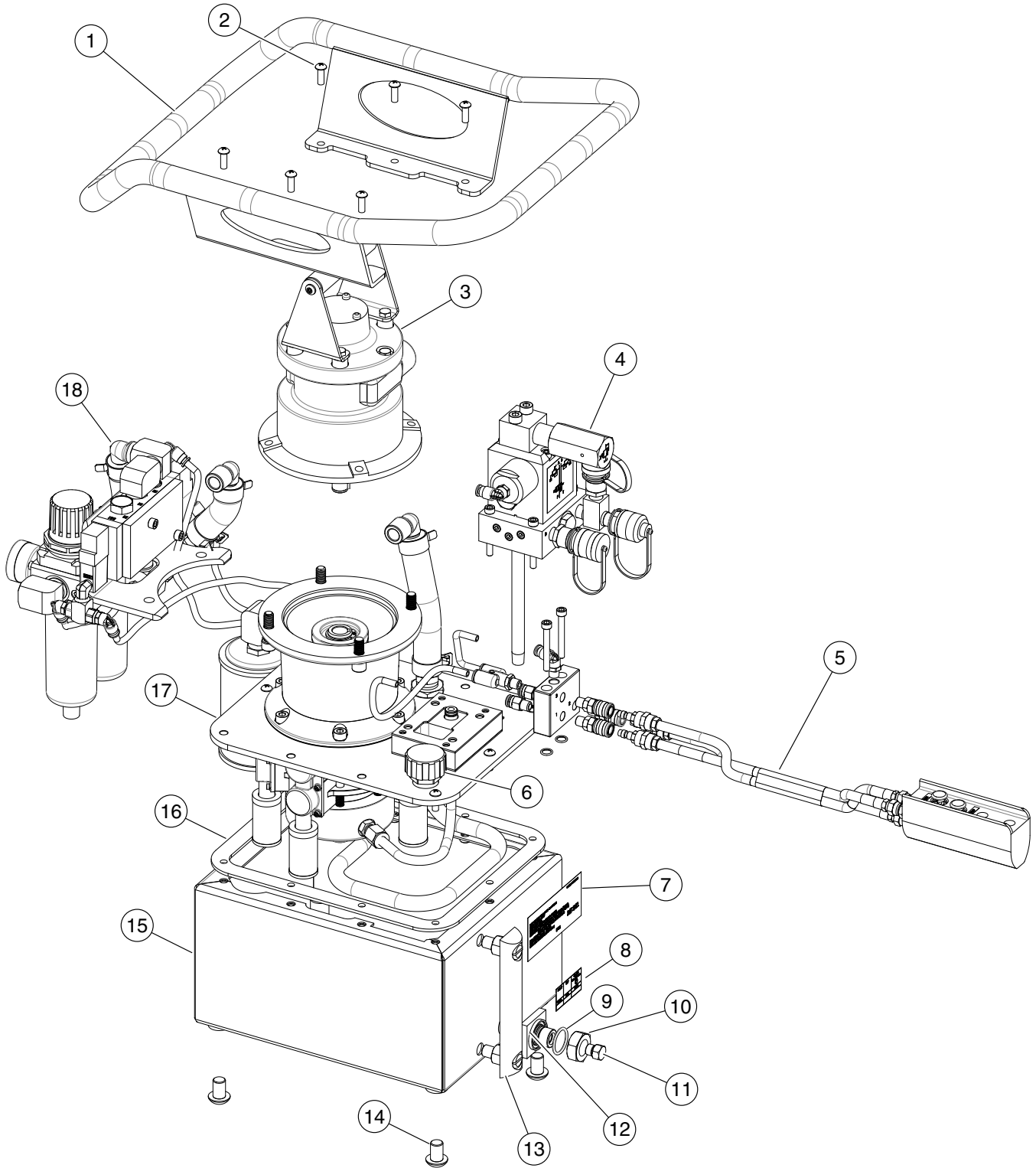
Model PCH Air Hydraulic Pump Maximum Capacity: 10,000 PSI



Parts List

| ITEM NO. | PART NO. | NO. REQ'D | PCHA60T3B0-C4-HYTORC FULL ASSEMBLY DESCRIPTION | NOTES |
|----------|-------------|-----------|--|---|
| 1 | 2001669RE7 | 1 | GUARD | |
| 2 | 10177 | 10 | SCREW | torque to 6.8Nm (60 in-lbs) |
| 3 | | 1 | AIR MOTOR ASSEMBLY | see Air Motor |
| 4 | | 1 | CONTROL VALVE AND MANIFOLD | see Control Valve & Manifold (C4) |
| 5 | | 1 | CONTROL PENDANT ASSEMBLY | see Control Pendant |
| 6 | 1683-AB | 1 | BREATHER | |
| 7 | 1000434 | 1 | PCHA HYTORC CE PERFORMANCE DECAL | |
| 8 | 1000379 | 1 | PCHA CE PUMP PERFORMANCE DECAL | |
| 9 | 14725 | 1 | O-RING | |
| 10 | 10396 | 1 | NUT | torque to 22.6Nm (200 in-lbs) |
| 11 | 17147 | 1 | PLUG FITTING | |
| 12 | 351000 | 1 | DRAIN | |
| 13 | 350431 | 1 | FLUID LEVEL GAUGE | torque to 5.6Nm (50 in-lbs) |
| 14 | 2001650 | 4 | SCREW | torque to 13.5Nm (120 in-lbs) |
| 15 | 65599BK-TXT | 1 | RESERVOIR | |
| 16 | 40164 | 1 | GASKET | |
| 17 | 3000525 | 1 | PCH AIR PUMP COVER PLATE ASSEMBLY | |
| 18 | | 1 | F-R-L ASSEMBLY AND MOUNT | see Filter-Regulator-Lubricator & Muffler |

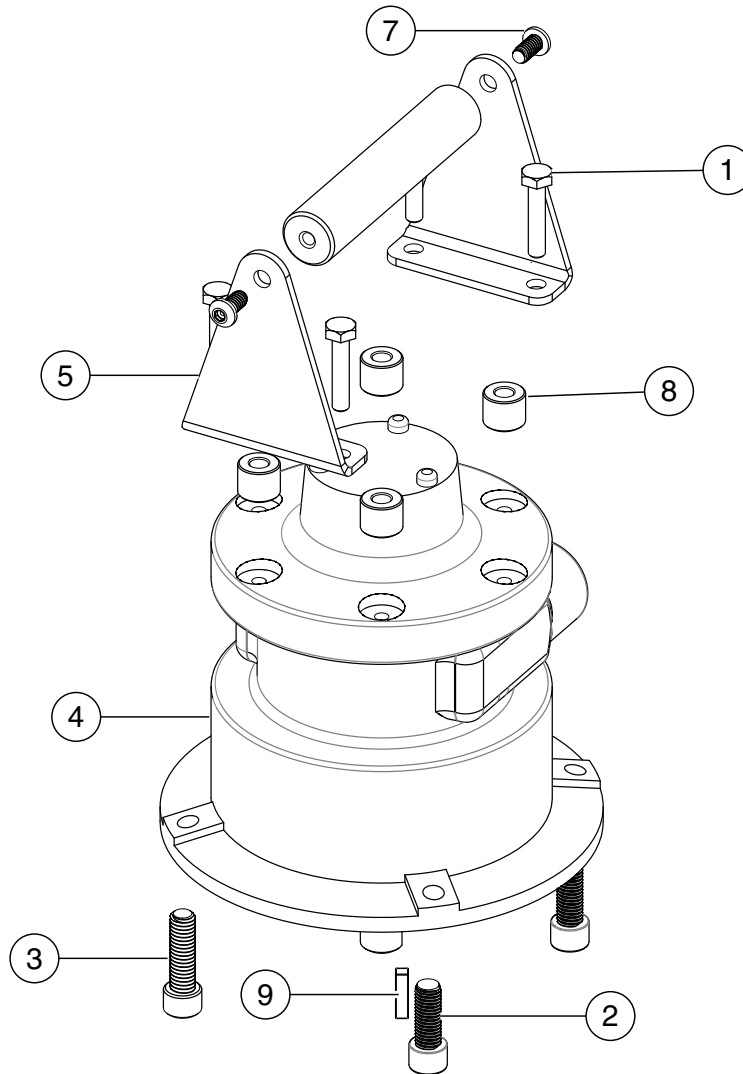
Air Hydraulic Pump (C)



Parts List

| ITEM NO. | PART NO. | NO. REQ'D | PCHA60T3B0-C-HYTORC FULL ASSEMBLY DESCRIPTION | NOTES |
|----------|-------------|-----------|---|---|
| 1 | 2001669RE7 | 1 | GUARD | |
| 2 | 10177 | 10 | SCREW | torque to 6.8Nm (60 in-lbs) |
| 3 | | 1 | AIR MOTOR ASSEMBLY | see Air Motor |
| 4 | | 1 | CONTROL VALVE AND MANIFOLD | see Control Valve & Manifold (C) |
| 5 | | 1 | PENDANT CONTROL ASSEMBLY | see Control Pendant |
| 6 | 1683-AB | 1 | BREATHER | |
| 7 | 1000530 | 1 | PCHA HYTORC CE PERFORMANCE DECAL | |
| 8 | 1000379 | 1 | PCHA CE PUMP PERFORMANCE DECAL | |
| 9 | 14725 | 1 | O-RING | |
| 10 | 10396 | 1 | NUT | torque to 22.6Nm (200 in-lbs) |
| 11 | 17147 | 1 | PLUG FITTING | |
| 12 | 351000 | 1 | DRAIN | |
| 13 | 350431 | 1 | FLUID LEVEL GAUGE | torque to 5.6Nm (50 in-lbs) |
| 14 | 2001650 | 4 | SCREW | torque to 13.5Nm (120 in-lbs) |
| 15 | 65599BK-TXT | 1 | RESERVOIR | |
| 16 | 40164 | 1 | GASKET | |
| 17 | 3000525 | 1 | PCH AIR PUMP COVER PLATE ASSEMBLY | |
| 18 | | 1 | F-R-L ASSEMBLY AND MOUNT | see Filter-Regulator-Lubricator & Muffler |

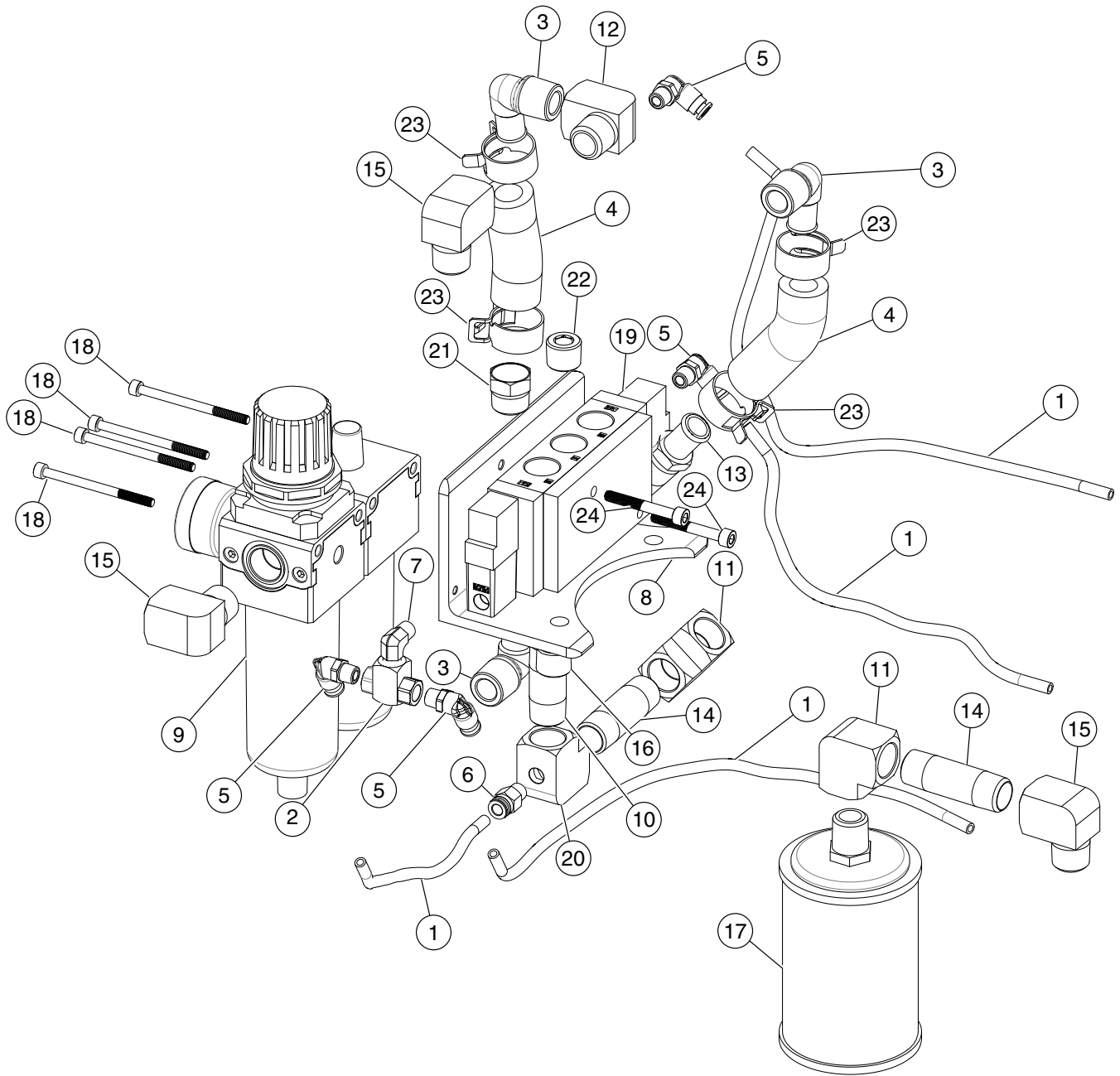
Air Motor



| ITEM NO. | PART NO. | NO. REQ'D | AIR MOTOR DESCRIPTION | NOTES |
|----------|------------|-----------|-----------------------|-------------------------------|
| 1 | 10018 | 4 | SCREW | torque to 20.3Nm (180 in-lbs) |
| 2 | 10050 | 2 | SCREW | torque to 20.3Nm (180 in-lbs) |
| 3 | 10053 | 2 | SCREW | torque to 20.3Nm (180 in-lbs) |
| 4 | 14717 | 1 | AIR MOTOR | |
| 5 | 33808 | 2 | HANDLE BRACKET | |
| 6 | 251437 | 2 | SCREW | torque to 20.3Nm (180 in-lbs) |
| 7 | 2001653 | 1 | HANDLE | |
| 8 | 2001662 | 4 | HANDLE BRACKET SPACER | |
| 9 | F9-2002-00 | 1 | SQUARE DRIVE KEY | |

Parts List

Filter-Regulator-Lubricator & Muffler

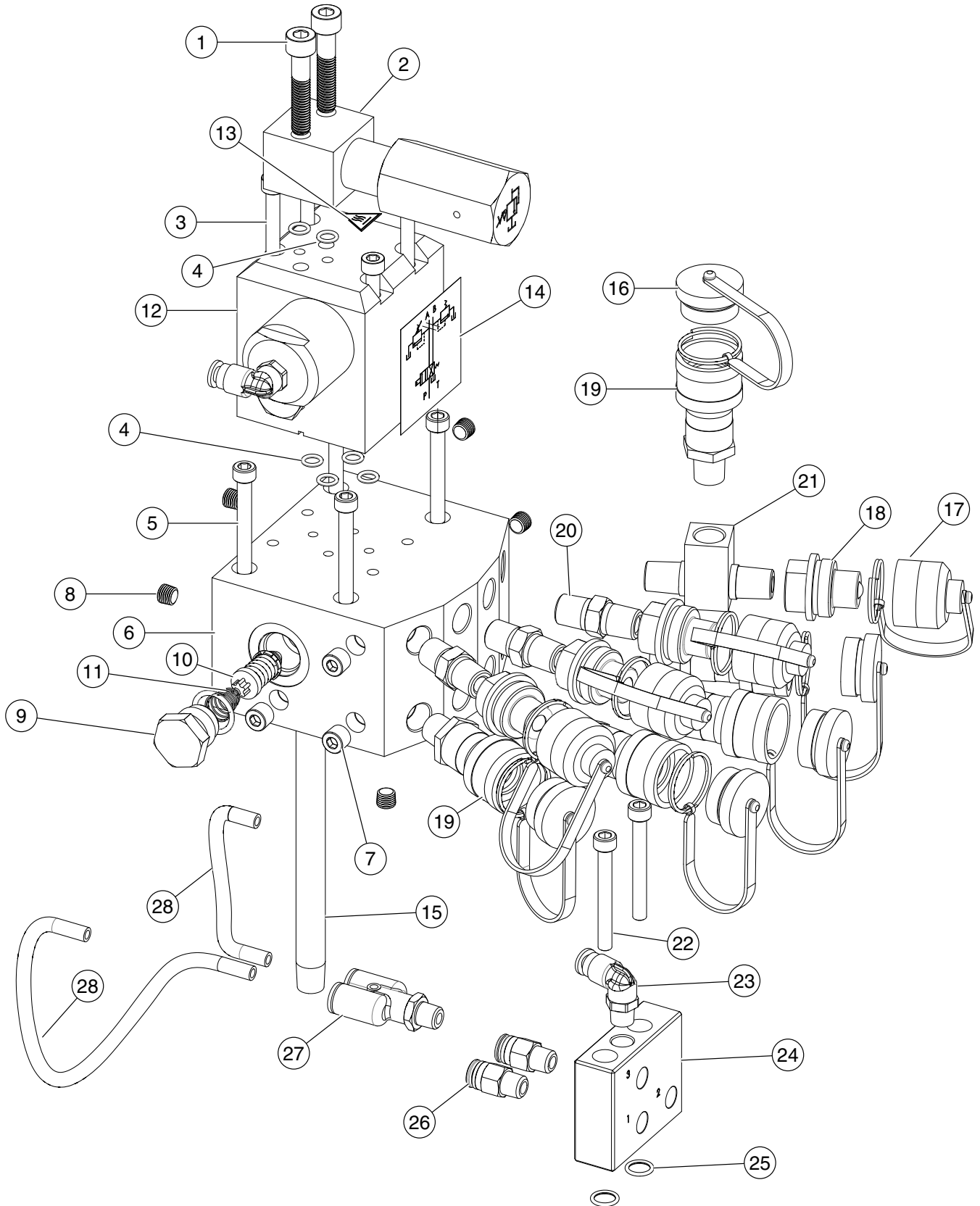


Parts List

| ITEM NO. | PART NO. | NO. REQ'D | F-R-L & MUFFLER DESCRIPTION | NOTES |
|----------|----------|-----------------|--|---|
| 1 | 15883 | 165 cm (65 in) | POLYETHYLENE TUBING NOTE: Tubing must be cut to exact length to retain CE-ATEX Rating | 152.4 mm (6 in), 406.4 mm (16 in), 266.7 mm (10.5 in), 303.2 mm (13 in), 177.8 mm (7 in), 279.4 mm (11 in) |
| 2 | 212405 | 1 | 1000 PSI CHECK VALVE | |
| 3 | 212897 | 3 | 90 DEGREE ELBOW FITTING | |
| 4 | 212898 | 38.1 cm (15 in) | PRESSURE HOSE | 82.5 mm (3.25 in), 95.2 mm (3.75 in), 157.7 mm (6.25 in) |
| 5 | 250463 | 4 | 90 DEGREE ELBOW FITTING | |
| 6 | 250464 | 1 | STRAIGHT FITTING, TUBE | |
| 7 | 251652 | 1 | 90 DEGREE ELBOW FITTING | |
| 8 | 2001575 | 1 | PCH VALVE BRACKET | |
| 9 | 2001580 | 1 | PCH AIR F-R-L ASSEMBLY | |
| 10 | 2001589 | 1 | STRAIGHT FITTING, LONG | |
| 11 | 2001591 | 2 | 90 DEGREE ELBOW | |
| 12 | 2001592 | 1 | 90 DEGREE ELBOW | |
| 13 | 2001593 | 1 | STRAIGHT FITTING, BARBED | |
| 14 | 2001594 | 2 | STRAIGHT FITTING, LONG | |
| 15 | 2001598 | 3 | 90 DEGREE ELBOW | |
| 16 | 2001599 | 1 | PLUG FITTING | |
| 17 | 2001604 | 1 | PCH AIR MUFFLER | |
| 18 | 2001613 | 4 | SCREW | torque to 5.6Nm (50 in-lbs) |
| 19 | 2001630 | 1 | PCH AIR VALVE | |
| 20 | 2001667 | 1 | 90 DEGREE ELBOW | |
| 21 | 2002165 | 1 | BREATHER VENT | |
| 22 | 2002223 | 1 | FILTER PLUG ASSEMBLY | |
| 23 | 2231-AA | 4 | PLUMBING CLAMP HOSE ADJUSTABLE INLET | |
| 24 | 2635-AA | 2 | SCREW | torque to 8.5Nm (75 in-lbs) |

Parts List

Control Valve & Manifold (C4)

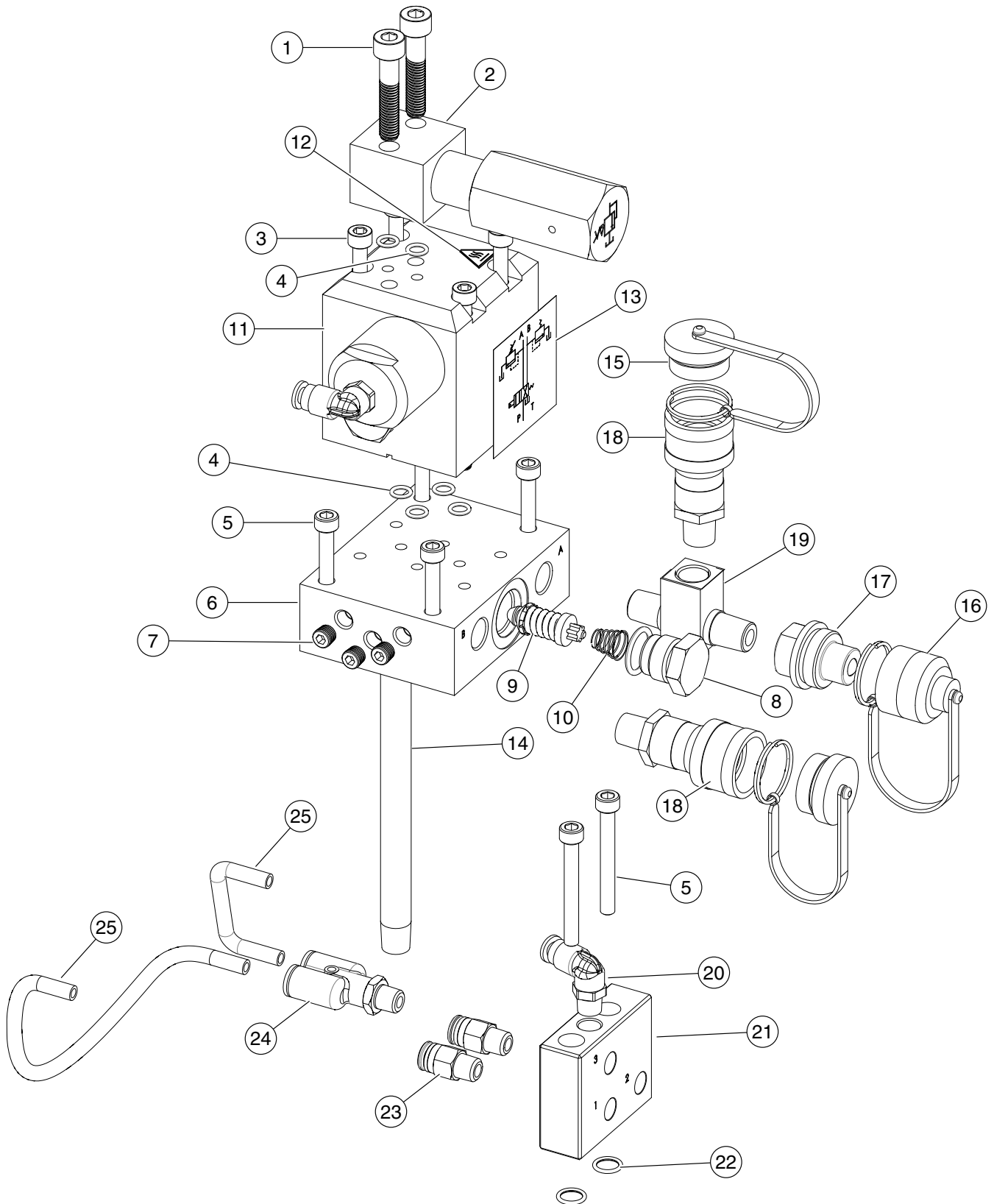


Parts List

| ITEM NO. | PART NO. | NO. REQ'D | PCHA60T3B0-C4-HYTORC CONTROL VALVE & MANIFOLD DESCRIPTION | NOTES |
|----------|----------|-----------------|--|--------------------------------------|
| 1 | 2001611 | 2 | SCREW | Torque to 33.9Nm (300 in-lbs) |
| 2 | 3000504 | 1 | RELIEF VALVE ASSEMBLY | |
| 3 | 2001608 | 4 | SCREW | Torque to 24.8Nm (220 in-lbs) |
| 4 | 12522 | 6 | O-RING | |
| 5 | 8073-AA | 4 | SCREW | Torque to 24.8Nm (220 in-lbs) |
| 6 | 2001712 | 1 | MULTI-PORT MANIFOLD VALVE | |
| 7 | 10427 | 3 | PLUG FITTING | |
| 8 | 15130 | 5 | PLUG FITTING | |
| 9 | 1600-BA | 1 | RELIEF CAP ASSEMBLY | |
| 10 | RV-11 | 1 | RELIEF ASSEMBLY FIXED 110 BAR | |
| 11 | 1225-BA | 1 | SPRING COM | |
| 12 | 3000529 | 1 | CONTROL VALVE | |
| 13 | 1000371 | 1 | ISO BURN HAZARD/HOT SURFACE DECAL | |
| 14 | 2001704 | 1 | 2P4W SCHEMATIC VALVE DECAL | |
| 15 | 200609 | 1 | DRAIN TUBE | |
| 16 | 252364 | 5 | DUST CAP (Male) | |
| 17 | 252365 | 4 | DUST CAP (Female) | |
| 18 | 251411 | 4 | QUICK PLUG COUPLER (Male) | |
| 19 | 251410 | 5 | QUICK COUPLER (Female) | |
| 20 | 10672 | 3 | STRAIGHT FITTING | |
| 21 | 16495 | 1 | TEE FITTING | |
| 22 | 5165-AA | 2 | SCREW | Torque to 24.8Nm (220 in-lbs) |
| 23 | 250463 | 1 | 90 DEGREE ELBOW FITTING | |
| 24 | 2001640 | 1 | PENDANT CONNECTION MANIFOLD | |
| 25 | 10268 | 2 | O-RING | |
| 26 | 250464 | 2 | STRAIGHT FITTING, TUBE | |
| 27 | 2001641 | 1 | Y MALE SWIVEL CONNECTOR | |
| 28 | 15883 | 55.9 mm (22 in) | POLYETHYLENE TUBING NOTE: Tubing must be cut to exact length to retain CE-ATEX Rating | 152.4 mm (6 in), 406.4 mm (16 in) |

Parts List

Control Valve & Manifold (C)

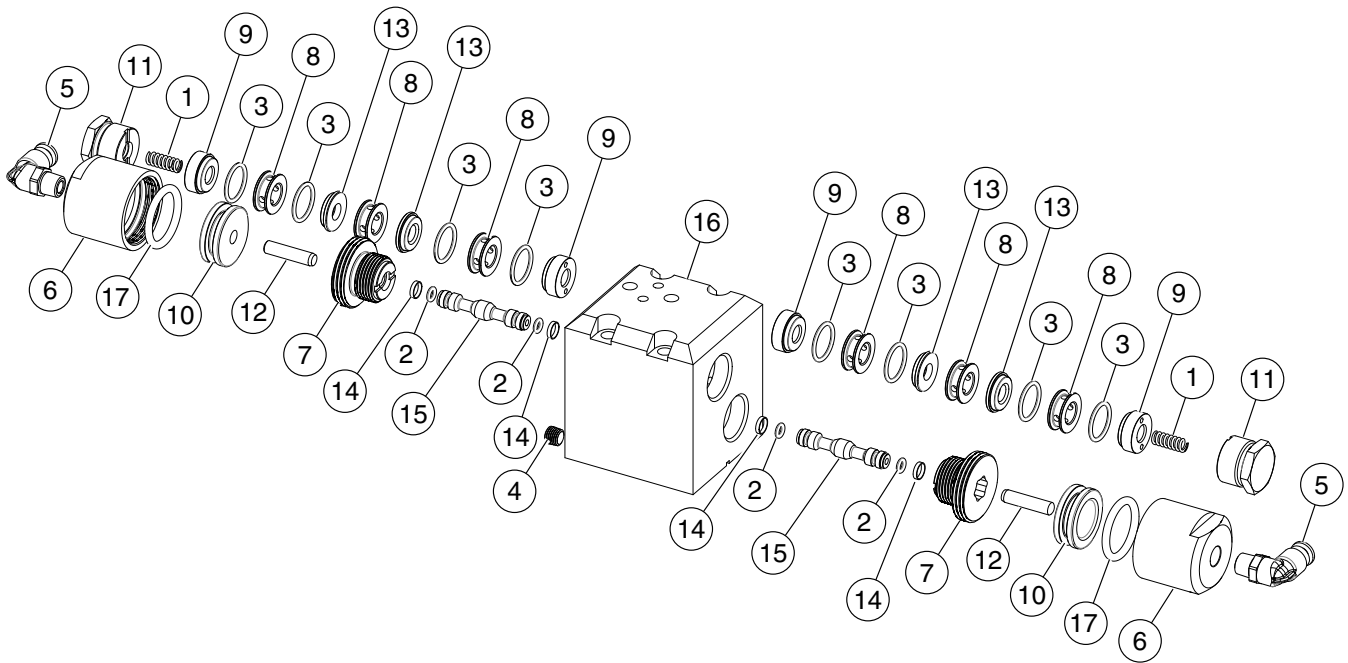


Parts List

| ITEM NO. | PART NO. | NO. REQ'D | PCHA60T3B0-C-HYTORC CONTROL VALVE & MANIFOLD DESCRIPTION | NOTES |
|----------|----------|-----------------|--|--------------------------------------|
| 1 | 2001611 | 2 | SCREW | Torque to 33.9Nm (300 in-lbs) |
| 2 | 3000504 | 1 | RELIEF VALVE ASSEMBLY | |
| 3 | 2001608 | 4 | SCREW | Torque to 24.8Nm (220 in-lbs) |
| 4 | 12522 | 6 | O-RING | |
| 5 | 5165-AA | 6 | SCREW | Torque to 24.8Nm (220 in-lbs) |
| 6 | 2001661 | 1 | MODULAR VALVE PCH AIR SUBPLATE | |
| 7 | 15130 | 3 | PLUG FITTING | |
| 8 | 1600-BA | 1 | RELIEF CAP ASSEMBLY | |
| 9 | RV-11 | 1 | RELIEF ASSEMBLY FIXED 110 BAR | |
| 10 | 1225-BA | 1 | SPRING COM | |
| 11 | 3000529 | 1 | CONTROL VALVE | |
| 12 | 1000371 | 1 | ISO BURN HAZARD/HOT SURFACE DECAL | |
| 13 | 2001704 | 1 | 2P4W SCHEMATIC VALVE DECAL | |
| 14 | 200609 | 1 | DRAIN TUBE | |
| 15 | 252364 | 2 | DUST CAP (Male) | |
| 16 | 252365 | 1 | DUST CAP (Female) | |
| 17 | 251411 | 1 | QUICK PLUG COUPLER (Male) | |
| 18 | 251410 | 2 | QUICK COUPLER (Female) | |
| 19 | 16495 | 1 | TEE FITTING | |
| 20 | 250463 | 1 | 90 DEGREE ELBOW FITTING | |
| 21 | 2001640 | 1 | PENDANT CONNECTION MANIFOLD | |
| 22 | 10268 | 2 | O-RING | |
| 23 | 250464 | 2 | STRAIGHT FITTING, TUBE | |
| 24 | 2001641 | 1 | Y MALE SWIVEL CONNECTOR | |
| 25 | 15883 | 55.9 mm (22 in) | POLYETHYLENE TUBING NOTE: Tubing must be cut to exact length to retain CE-ATEX Rating | 152.4 mm (6 in), 406.4 mm (16 in) |

Parts List

3000529 Control Valve

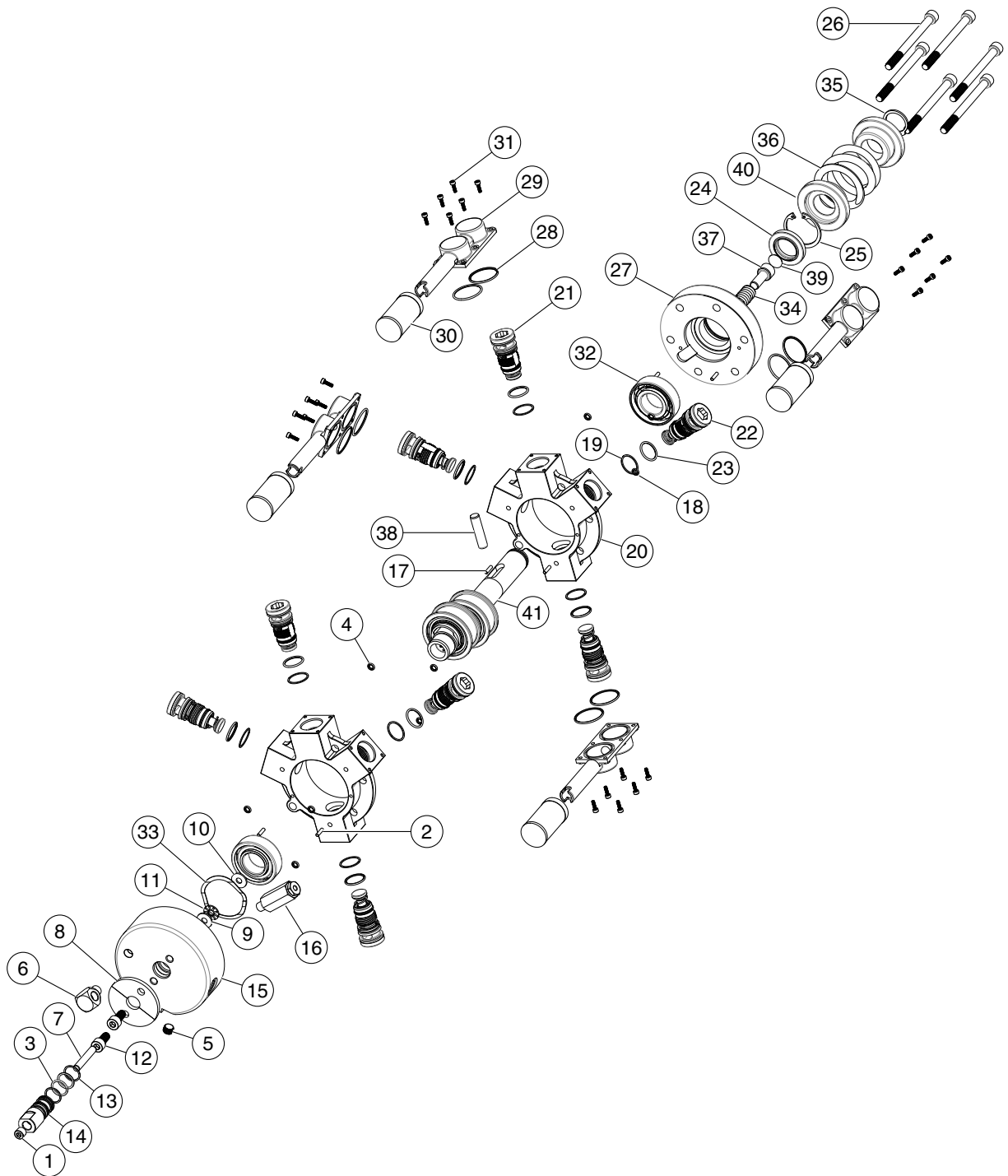


| ITEM NO. | PART NO. | NO. REQ'D | CONTROL VALVE DESCRIPTION | NOTES |
|----------|----------|-----------|--------------------------------|-------|
| 1 | 10360 | 2 | SPRING COM | |
| 2 | 12099 | 4 | O-RING | |
| 3 | 15011 | 8 | O-RING | |
| 4 | 15130 | 1 | PLUG FITTING | |
| 5 | 250463 | 2 | 90 DEGREE ELBOW FITTING | |
| 6 | 2001567 | 2 | PNEUMATIC CYLINDER | |
| 7 | 2001569 | 2 | PLUG | |
| 8 | 2001579 | 6 | HYDRAULIC VALVE SPACER | |
| 9 | 2001581 | 4 | SPOOL GUIDE | |
| 10 | 2001583 | 2 | PNEUMATIC PISTON | |
| 11 | 2001586 | 2 | PLUG | |
| 12 | 2001587 | 2 | DOWEL PIN | |
| 13 | 2001595 | 4 | SPOOL VALVE SEAT | |
| 14 | 2001614 | 4 | PISTON SEAL | |
| 15 | 2001619 | 2 | SPOOL | |
| 16 | 2001633 | 1 | PCH MODULAR AIR VALVE MANIFOLD | |
| 17 | 808-004 | 2 | BREATHER O-RING | |

Parts List

| ITEM NO. | PART NO. | NO. REQ'D | PUMP & ADAPTER ASSEMBLY DESCRIPTION | NOTES |
|----------|----------|-----------|--------------------------------------|-----------------------------|
| 1 | 10268 | 1 | O-RING | |
| 2 | 10430 | 1 | TUBE SLEEVE | |
| 3 | 10431 | 1 | FITTING, NUT | |
| 4 | 10661 | 1 | STRAIGHT FITTING, TUBE | |
| 5 | 11863 | 1 | BACKUP WASHER | |
| 6 | 15175 | 2 | O-RING | |
| 7 | 20787 | 1 | VALVE CONNECTOR | |
| 8 | 35266 | 1 | PUMP TO COVER GASKET | |
| 9 | 212897 | 1 | 90 DEGREE ELBOW FITTING | |
| 10 | 212898 | 1 | PRESSURE HOSE | 157.7 mm (6.25 in) |
| 11 | 2001022 | 1 | MOTOR MOUNT | |
| 12 | 2001576 | 1 | PCH AIR MOTOR ADAPTOR | |
| 13 | 2001577 | 1 | PCH AIR RESERVOIR COVER | |
| 14 | 2001578 | 1 | ADAPTER TO COVERPLATE GASKET | |
| 15 | 2001590 | 2 | FITTING | |
| 16 | 2001593 | 1 | STRAIGHT FITTING, BARBED | |
| 17 | 2001601 | 6 | SCREW | torque to 6.8Nm (60 in-lbs) |
| 18 | 2001603 | 2 | STRAIGHT FITTING, TUBE | |
| 19 | 2001606 | 10 | SCREW | torque to 6.8Nm (60 in-lbs) |
| 20 | 2001618 | 1 | 3/8 HIGH PRESSURE TUBE | |
| 21 | 2001627 | 2 | GASKET | |
| 22 | 2001631 | 1 | PCH AIR COOLING TUBING | |
| 23 | 2001636 | 1 | VALVE MOUNTING BLOCK | |
| 24 | 3000524 | 1 | PCH AIR PUMP ASSEMBLY | |
| 25 | 2231-AA | 2 | PLUMBING CLAMP HOSE ADJUSTABLE INLET | |

Steel Pump Assembly



| ITEM NO. | PART NO. | NO. REQ'D | STEEL PUMP ASSEMBLY DESCRIPTION | NOTES |
|----------|----------|-----------|---------------------------------|-----------------------------|
| 1 | 10427 | 1 | PLUG FITTING | See Pump Assembly Section 1 |
| 2 | 10796 | 2 | DOWEL PIN | See Pump Assembly Section 1 |

Parts List

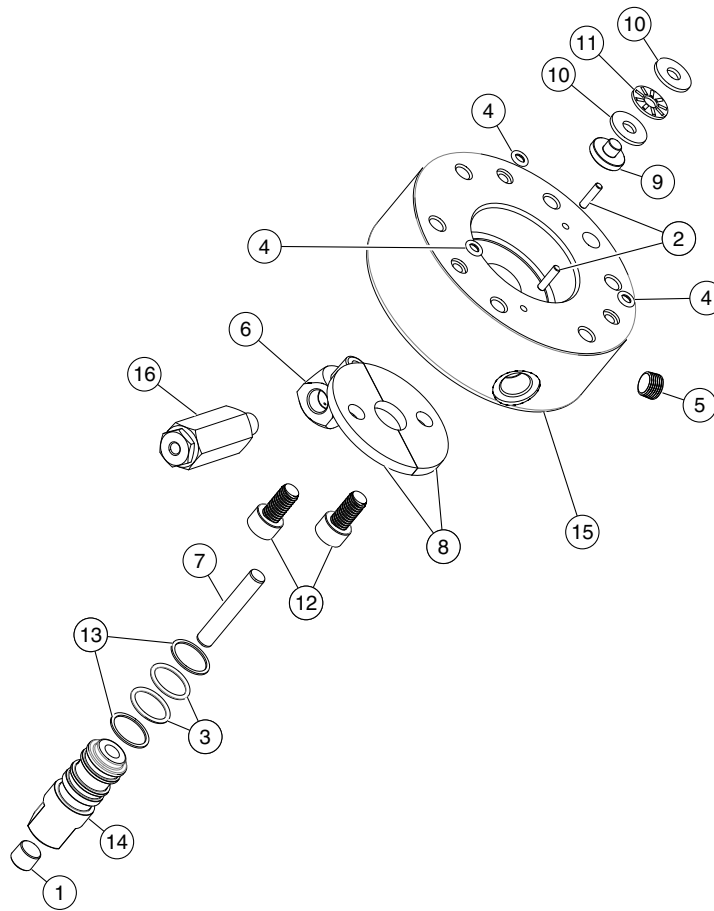
| ITEM NO. | PART NO. | NO. REQ'D | STEEL PUMP ASSEMBLY DESCRIPTION | NOTES |
|----------|----------|-----------|--|--|
| 3 | 15011 | 2 | O-RING | See Pump Assembly Section 1 |
| 4 | 15023 | 3 | O-RING | See Pump Assembly Section 1 |
| 5 | 15499 | 1 | HEX SOCKET PLUG (DRYSEAL) | See Pump Assembly Section 1 |
| 6 | 24730 | 1 | 90 DEGREE ELBOW FITTING | See Pump Assembly Section 1 |
| 7 | 2000671 | 1 | DOWEL PIN | See Pump Assembly Section 1 |
| 8 | 2000681 | 2 | RETAINING PLATE (CHP) | See Pump Assembly Section 1 |
| 9 | 2001028 | 1 | THRUST BEARING GUIDE | See Pump Assembly Section 1 |
| 10 | 2001029 | 2 | NEEDLE BEARING WASHER | See Pump Assembly Section 1 |
| 11 | 2001030 | 1 | NEEDLE BEARING ELEMENT | See Pump Assembly Section 1 |
| 12 | 2001606 | 2 | SCREW | See Pump Assembly Section 1 |
| 13 | 2001610 | 2 | BACKUP WASHER | See Pump Assembly Section 1 |
| 14 | 2001620 | 1 | PILOT PISTON BODY | See Pump Assembly Section 1 |
| 15 | 2001852 | 1 | PCH ROUND BACK COVER | See Pump Assembly Section 1 replaces 2001626 |
| 16 | 3000377 | 1 | RELIEF VALVE ASSEMBLY - 748 bar (10,850 psi) | See Pump Assembly Section 1 |
| 17 | 10796 | 4 | DOWEL PIN | See Pump Assembly Section 2 |
| 18 | 15023 | 6 | O-RING | See Pump Assembly Section 2 |
| 19 | 2001398 | 8 | BACKUP WASHER | See Pump Assembly Section 2 |
| 20 | 2001854 | 2 | PREDATOR PUMP BODY | See Pump Assembly Section 2, replaces 2001621, requires TAPER cartridge |
| 21 | 3000526 | 2 | LUBE PISTON CARTRIDGE ASSEMBLY | See Pump Assembly Section 2, torque to 81.3Nm (60 ft-lbs), replaces 3000324, this is a TAPER cartridge |

Parts List

| ITEM NO. | PART NO. | NO. REQ'D | STEEL PUMP ASSEMBLY DESCRIPTION | NOTES |
|----------|----------|-----------|-------------------------------------|--|
| 22 | 3000527 | 6 | PUMP PISTON CARTRIDGE ASSEMBLY | See Pump Assembly Section 2, torque to 81.3Nm (60 ft-lbs), replaces 3000325, this is a TAPER cartridge |
| 23 | 4029-AA | 8 | O-RING | See Pump Assembly Section 2 |
| 24 | 2000689 | 1 | MOTOR SHAFT SEAL (CHP) | See Pump Assembly Section 3 |
| 25 | 2001087 | 1 | RING | See Pump Assembly Section 3 |
| 26 | 2001600 | 6 | SCREW | See Pump Assembly Section 3 |
| 27 | 2001853 | 1 | PCH ROUND FRONT COVER | See Pump Assembly Section 3 |
| 28 | 15175 | 8 | O-RING | See Pump Assembly Section 4 |
| 29 | 2001596 | 4 | PREDATOR INLET SUCTION FITTING | See Pump Assembly Section 4 |
| 30 | 2001605 | 4 | INLET SUCTION FILTER | See Pump Assembly Section 4 |
| 31 | 2001607 | 24 | SCREW | See Pump Assembly Section 4 |
| 32 | 2000664 | 2 | ANGULAR CONTACT BEARING, 25mm (CHP) | See Pump Assembly Section 5 |
| 33 | 2000683 | 1 | SPRING WAVE WASHER | See Pump Assembly Section 5 |
| 34 | 2000970 | 1 | PUMP SHAFT INNER SPRING | See Pump Assembly Section 5 |
| 35 | 2000971 | 1 | RING | See Pump Assembly Section 5 |
| 36 | 2001010 | 1 | PUMP SHAFT OUTER SPRING | See Pump Assembly Section 5 |
| 37 | 2001011 | 1 | SPRING INTERNAL GUIDE | See Pump Assembly Section 5 |
| 38 | 2001012 | 1 | DOWEL PIN | See Pump Assembly Section 5 |
| 39 | 2001412 | 1 | THICK SHIM | See Pump Assembly Section 5 |
| 40 | 2001460 | 2 | EXTERNAL SPRING GUIDE | See Pump Assembly Section 5 |
| 41 | 3000499 | 1 | PCH AIR SHAFT ASSEMBLY | See Pump Assembly Section 5 |

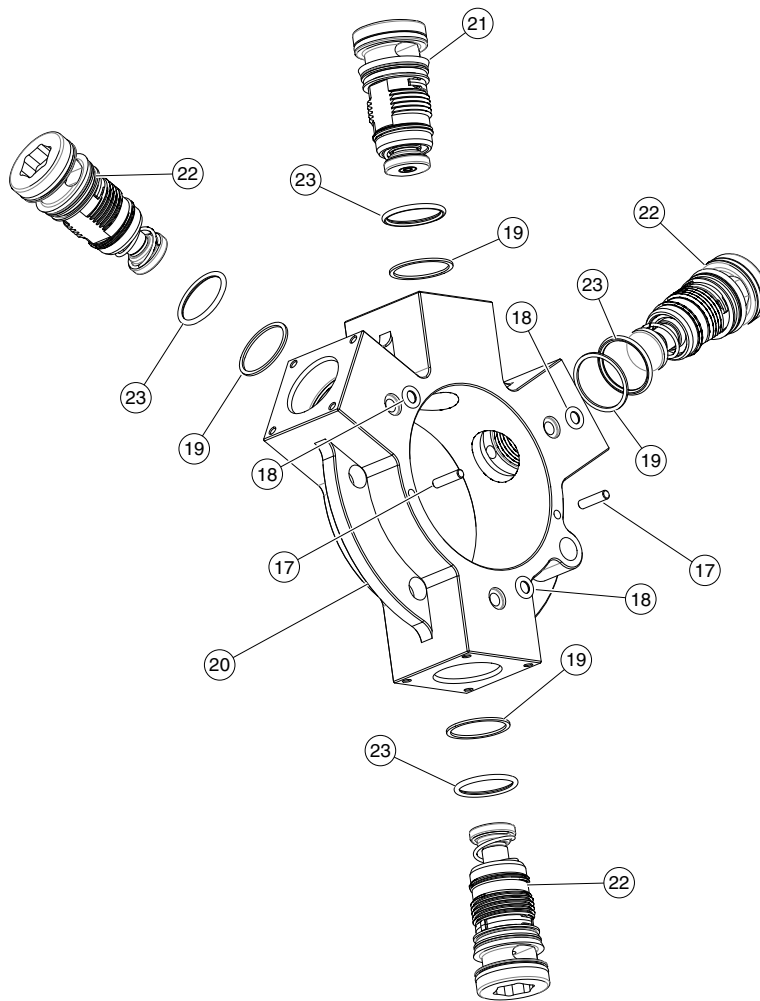
Parts List

Pump Assembly Section 1



| ITEM NO. | PART NO. | NO. REQ'D | STEEL PUMP ASSEMBLY DESCRIPTION | NOTES |
|----------|----------|-----------|--|---------------------|
| 1 | 10427 | 1 | PLUG FITTING | |
| 2 | 10796 | 2 | DOWEL PIN | |
| 3 | 15011 | 2 | O-RING | |
| 4 | 15023 | 3 | O-RING | |
| 5 | 15499 | 1 | HEX SOCKET PLUG (DRYSEAL) | |
| 6 | 24730 | 1 | 90 DEGREE ELBOW FITTING | |
| 7 | 2000671 | 1 | DOWEL PIN | |
| 8 | 2000681 | 2 | RETAINING PLATE (CHP) | |
| 9 | 2001028 | 1 | THRUST BEARING GUIDE | |
| 10 | 2001029 | 2 | NEEDLE BEARING WASHER | |
| 11 | 2001030 | 1 | NEEDLE BEARING ELEMENT | |
| 12 | 2001606 | 2 | SCREW | 13.5Nm (120 in-lbs) |
| 13 | 2001610 | 2 | BACKUP WASHER | |
| 14 | 2001620 | 1 | PILOT PISTON BODY | |
| 15 | 2001852 | 1 | PCH ROUND BACK COVER | replaces 2001626 |
| 16 | 3000377 | 1 | RELIEF VALVE ASSEMBLY - 748 bar (10,850 psi) | |

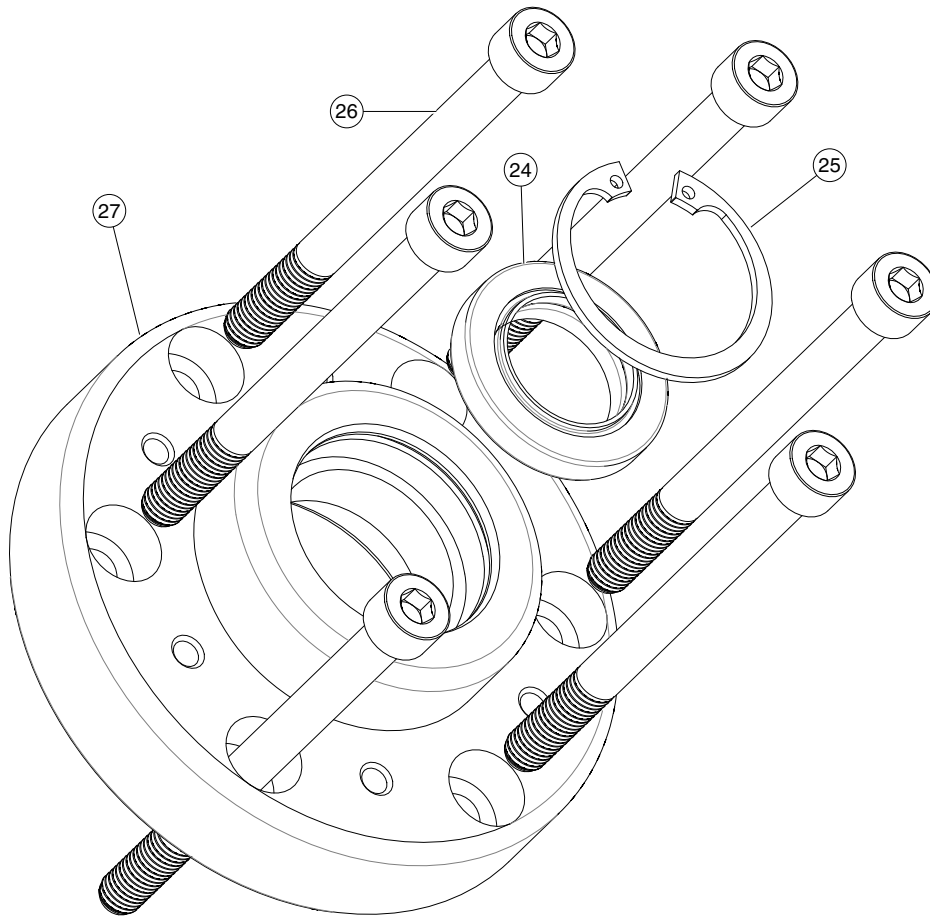
Pump Assembly Section 2



| ITEM NO. | PART NO. | NO. REQ'D | STEEL PUMP ASSEMBLY DESCRIPTION | NOTES |
|----------|----------|-----------|---------------------------------|---|
| 17 | 10796 | 4 | DOWEL PIN | |
| 18 | 15023 | 6 | O-RING | |
| 19 | 2001398 | 8 | BACKUP WASHER | |
| 20 | 2001854 | 2 | PREDATOR PUMP BODY | replaces 2001621, requires TAPER cartridge |
| 21 | 3000526 | 2 | LUBE PISTON CARTRIDGE ASSY | torque to 81.3Nm (60 ft-lbs), replaces 3000324, this is a TAPER cartridge |
| 22 | 3000527 | 6 | PUMP PISTON CARTRIDGE ASSY | torque to 81.3Nm (60 ft-lbs), replaces 3000325, this is a TAPER cartridge |
| 23 | 4029-AA | 8 | O-RING | |

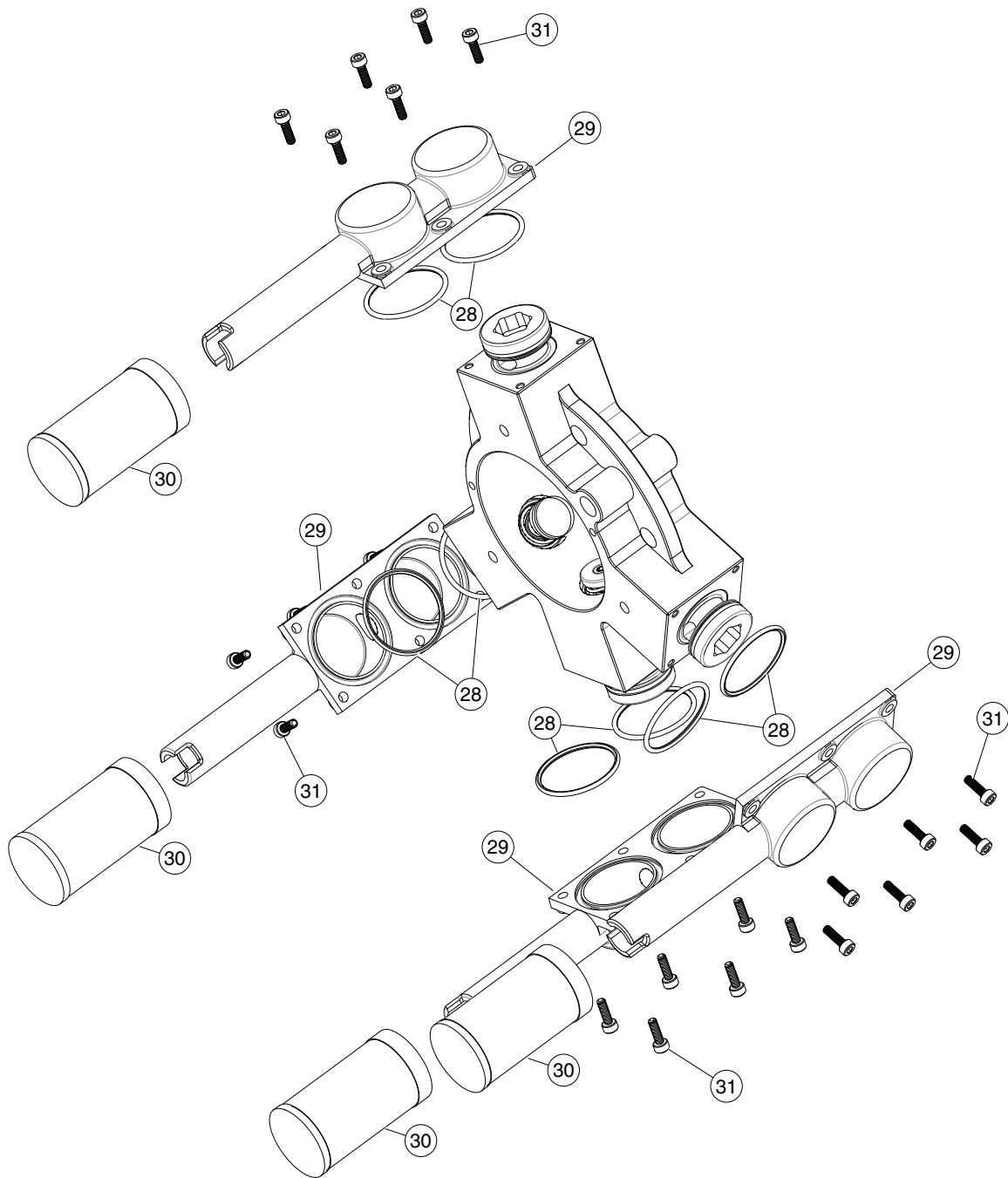
Parts List

Pump Assembly Section 3



| ITEM NO. | PART NO. | NO. REQ'D | STEEL PUMP ASSEMBLY DESCRIPTION | NOTES |
|----------|----------|-----------|---------------------------------|----------------------------------|
| 24 | 2000689 | 1 | MOTOR SHAFT SEAL (CHP) | |
| 25 | 2001087 | 1 | RING | |
| 26 | 2001600 | 6 | SCREW | torque to 13.5Nm (120 in-lbs) |
| 27 | 2001853 | 1 | PCH ROUND FRONT COVER | |

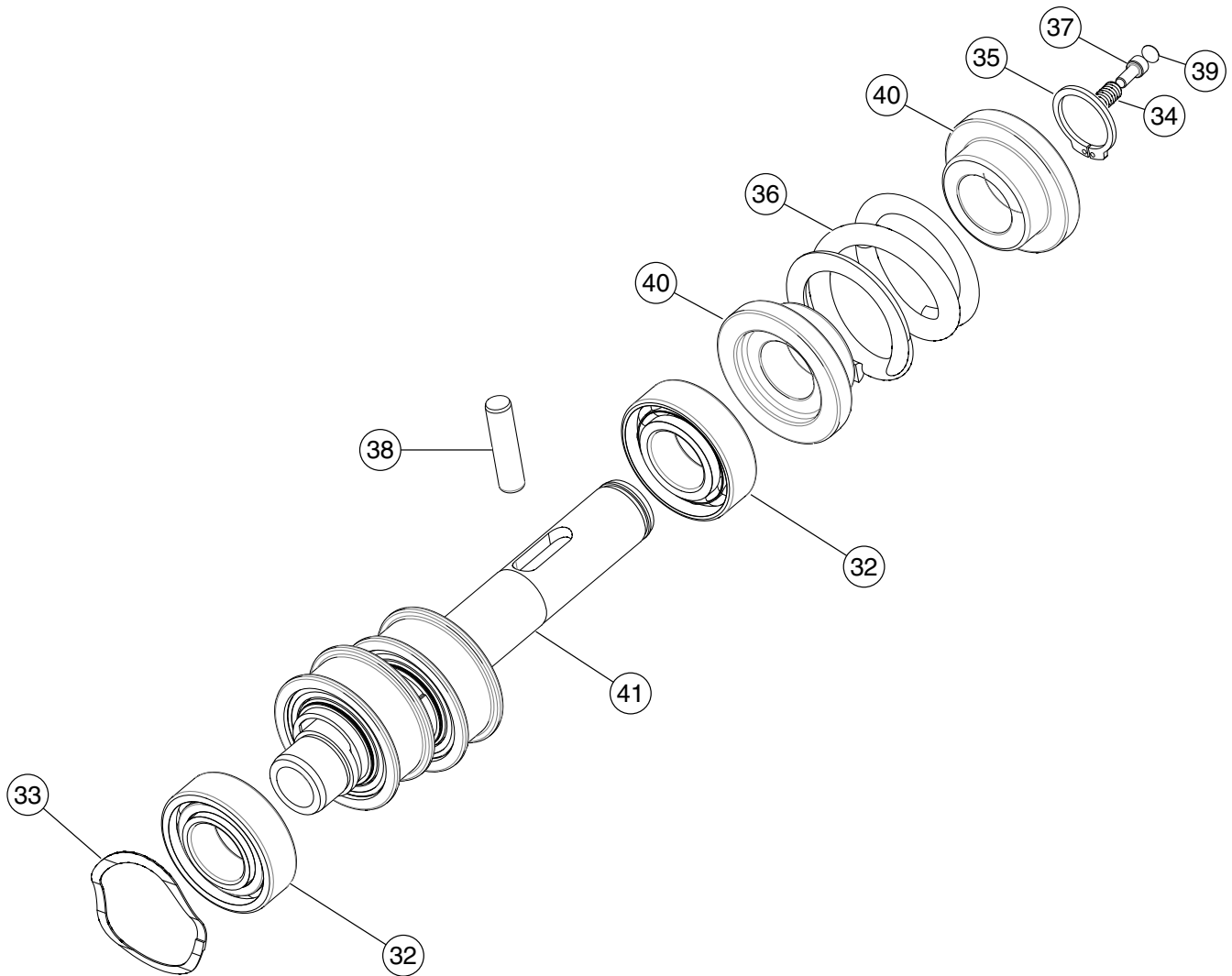
Pump Assembly Section 4



| ITEM NO. | PART NO. | NO. REQ'D | STEEL PUMP ASSEMBLY DESCRIPTION | NOTES |
|----------|----------|-----------|---------------------------------|-------------------------------|
| 28 | 15175 | 8 | O-RING | |
| 29 | 2001596 | 4 | PREDATOR INLET SUCTION FITTING | |
| 30 | 2001605 | 4 | INLET SUCTION FILTER | |
| 31 | 2001607 | 24 | SCREW | torque to 0.9Nm (8 in-lbs) |

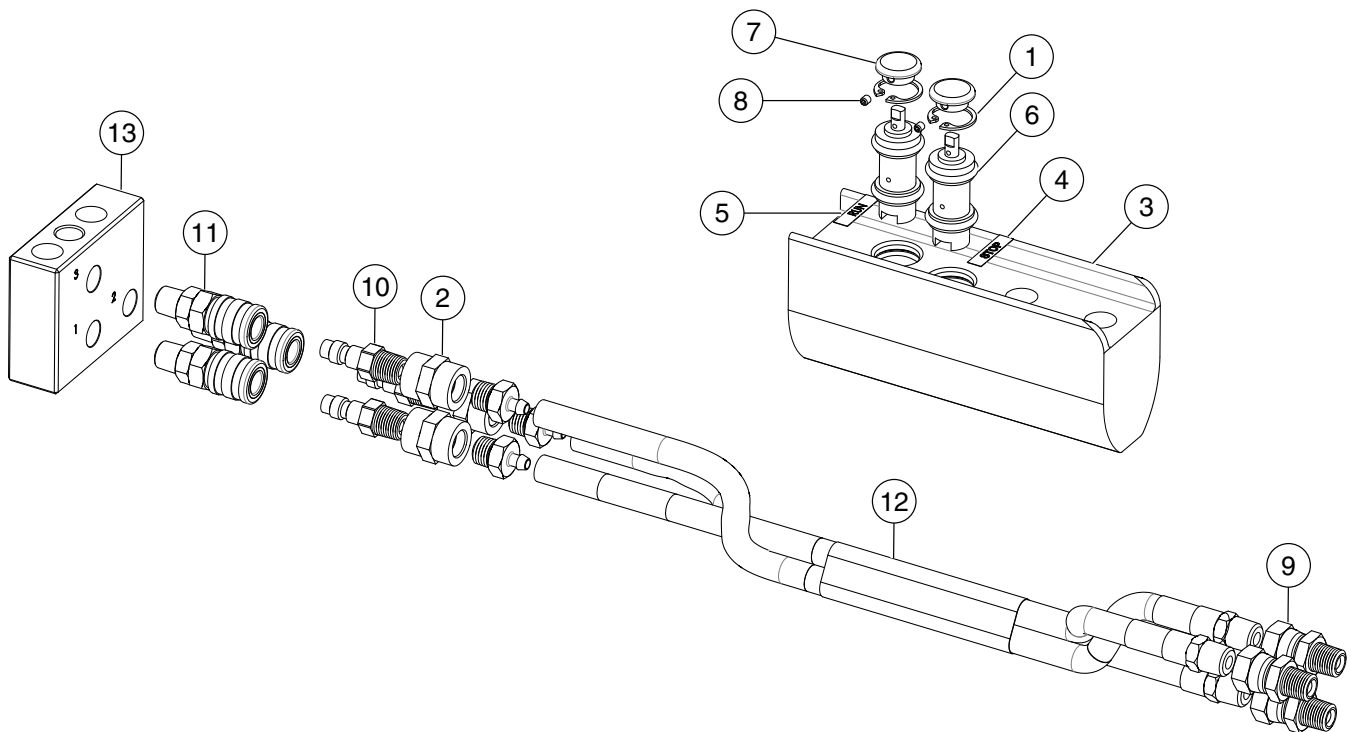
Parts List

Pump Assembly Section 5



| ITEM NO. | PART NO. | NO. REQ'D | STEEL PUMP ASSEMBLY DESCRIPTION | NOTES |
|----------|----------|-----------|-------------------------------------|-------|
| 32 | 2000664 | 2 | ANGULAR CONTACT BEARING, 25mm (CHP) | |
| 33 | 2000683 | 1 | SPRING WAVE WASHER | |
| 34 | 2000970 | 1 | PUMP SHAFT INNER SPRING | |
| 35 | 2000971 | 1 | RING | |
| 36 | 2001010 | 1 | PUMP SHAFT OUTER SPRING | |
| 37 | 2001011 | 1 | SPRING INTERNAL GUIDE | |
| 38 | 2001012 | 1 | DOWEL PIN | |
| 39 | 2001412 | 1 | THICK SHIM | |
| 40 | 2001460 | 2 | EXTERNAL SPRING GUIDE | |
| 41 | 3000499 | 1 | PCH AIR SHAFT ASSEMBLY | |

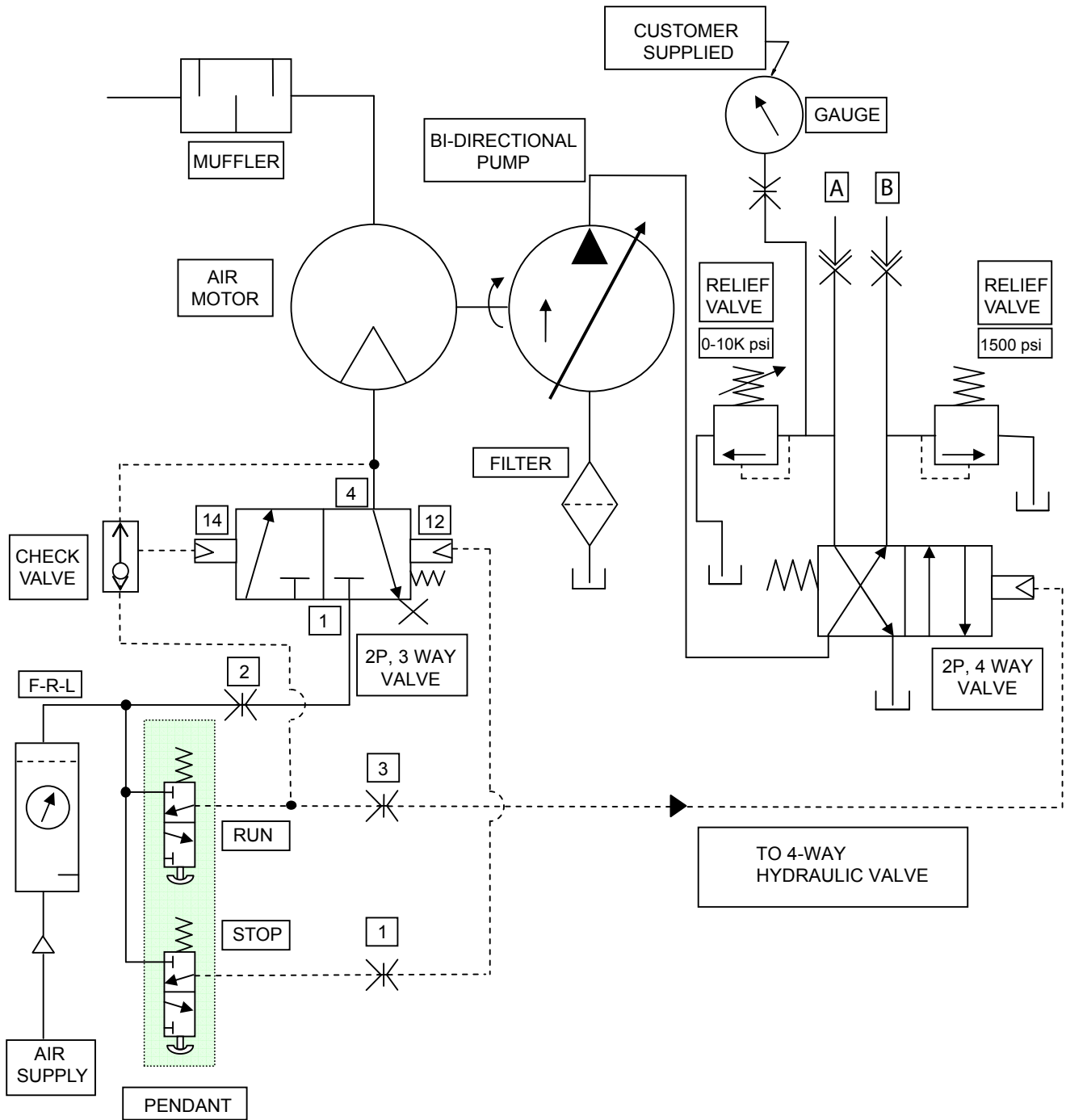
Control Pendant



| ITEM NO. | PART NO. | NO. REQ'D | CONTROL PENDANT DESCRIPTION | NOTES |
|----------|----------|-----------|-----------------------------------|--|
| 1 | 11033 | 2 | RING | |
| 2 | 18841 | 3 | STRAIGHT FITTING | |
| 3 | 44024 | 1 | VALVE BODY | |
| 4 | 203769 | 1 | LABEL STOP DECAL | |
| 5 | 203770 | 1 | LABEL RUN DECAL | |
| 6 | 206104 | 2 | VALVE 3 WAY CLOSED CARTRIDGE | |
| 7 | 206105 | 2 | PUSH W/WRENCH BUTTON | |
| 8 | | 2 | SET SCREW | included in 206105 |
| 9 | 208218 | 3 | STRAIGHT FITTING | |
| 10 | 213343 | 3 | PLUG COUPLER (MALE) | |
| 11 | 213344 | 3 | FEMALE QUICK COUPLER, FOSTER 2202 | |
| 12 | 420096 | 1 | THREE STRAND 25' HOSE | CLEAR =2, SUPPLY YELLOW =3, RUN BLACK =1, STOP |
| 13 | 2001640 | 1 | PENDANT CONNECTION MANIFOLD | referenced on other pages |

Parts List

PCHA60T3B0-C Hydraulic/Pneumatic Schematic



PCHA60T3B0-C4 Hydraulic/Pneumatic Schematic

