



HYTORC®

DIVISION UNEX CORPORATION

333 STATE RTE. 17 NORTH
MAHWAH, NJ 07430-9895
Tel: (201) 512-9500
Fax: (201) 512-9615

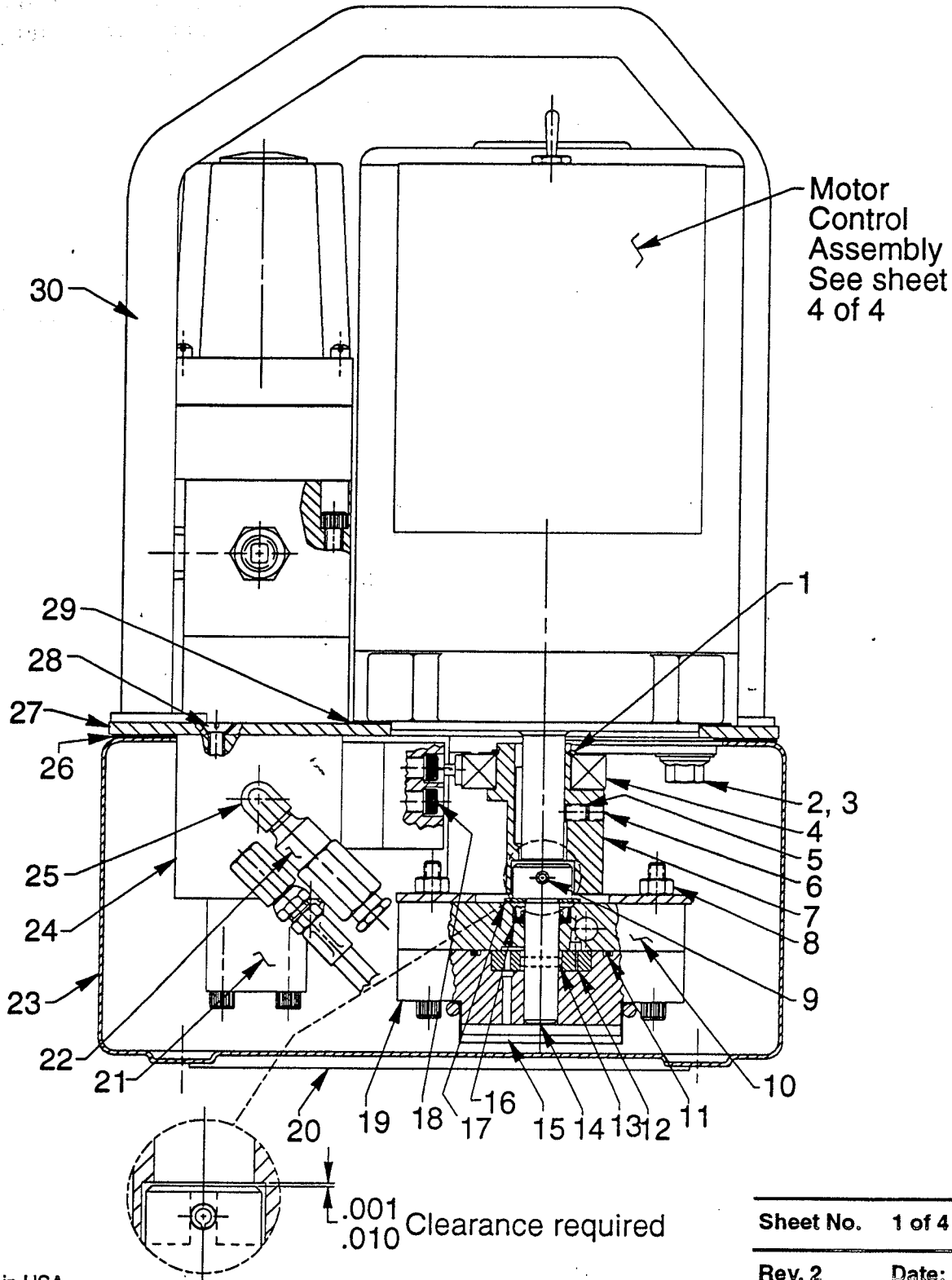
Form No. 107268

Parts List for:

SST-302S
YE100
YE230

ELECTRIC HYDRAULIC PUMP

Max. Capacity: 10,000 PSI



Sheet No. 1 of 4

Rev. 2

Date: 11 Aug. 1997

Parts List, Form No. 107268, Back sheet 1 of 4

Item No.	Part No.	No. Req'd	Description
1	209798	1	Retaining Ring
2	213663	4	Cap Screw (3/8-16 UNC X 1" Lg.)
3	10258	4	Washer (For 3/8 bolt)
4	209805	1	Ball Bearing
5	10136	1	Set Screw (1/4-20 UNC x 1/4 Lg.; Torque to 70 in. lbs.)
6	10519	1	Set Screw (1/4-20 UNC X 3/8 Lg.; Torque to 70 in. lbs.)
7	420840	1	Eccentric
8	10199	2	Hex Nut (1/4-20 UNC)
9	12298	1	Roll Pin (3/16 dia. X 1-1/2" Lg.)
10	64623	1	Upper Gerotor Housing
11	10922	1	O-ring (2-1/8 X 1-15/16" X 3/32)
12	304826	1	Gerotor
13	209794	1	Gerotor Drive Pin
14	350940	1	Gerotor Shaft
15	21846	1	Filter Support
16	304830	1	Oil Seal

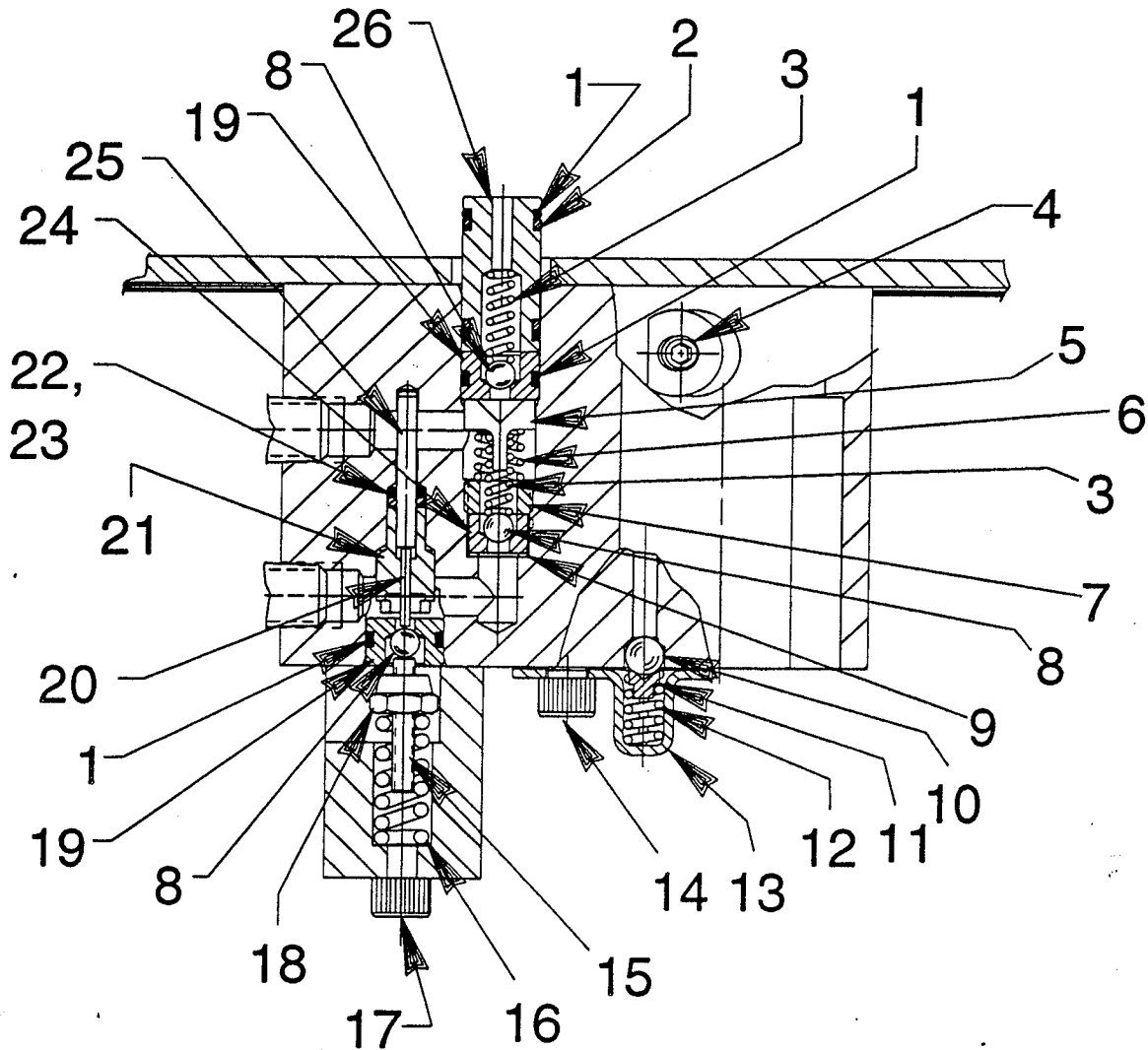
Item No.	Part No.	No. Req'd	Description
17	12595	1	Washer (1-1/8" X 1/2 X .077 Thk.)
18	10022	6	Screw (1/4-20 UNC X 1-1/2" Lg.; Torque to 120 in. lbs.)
19	64580	1	Gerotor Housing
20	420948	1	Rubber Pad
21	350930	1	Retaining Block
22	21278	1	Relief Valve Assembly
23	64665BK2	1	Reservoir
24	64612	1	Check Body
25	13229	1	Street Elbow
26	420931	1	Reservoir Gasket
27	64666BK2	1	Cover Plate
28	11529	2	Screw (1/4-20 UNC X 3/4 Lg.)
29	351060	1	Motor Base Gasket
30	64677BK2	1	Handle

Refer to any operating instructions included with this product for detailed information about operation, testing, disassembly, reassembly, and preventive maintenance.

Items found in this parts list have been carefully tested and selected. Therefore: **Use only genuine replacement parts!**

Additional questions can be directed to our Technical Services Department.

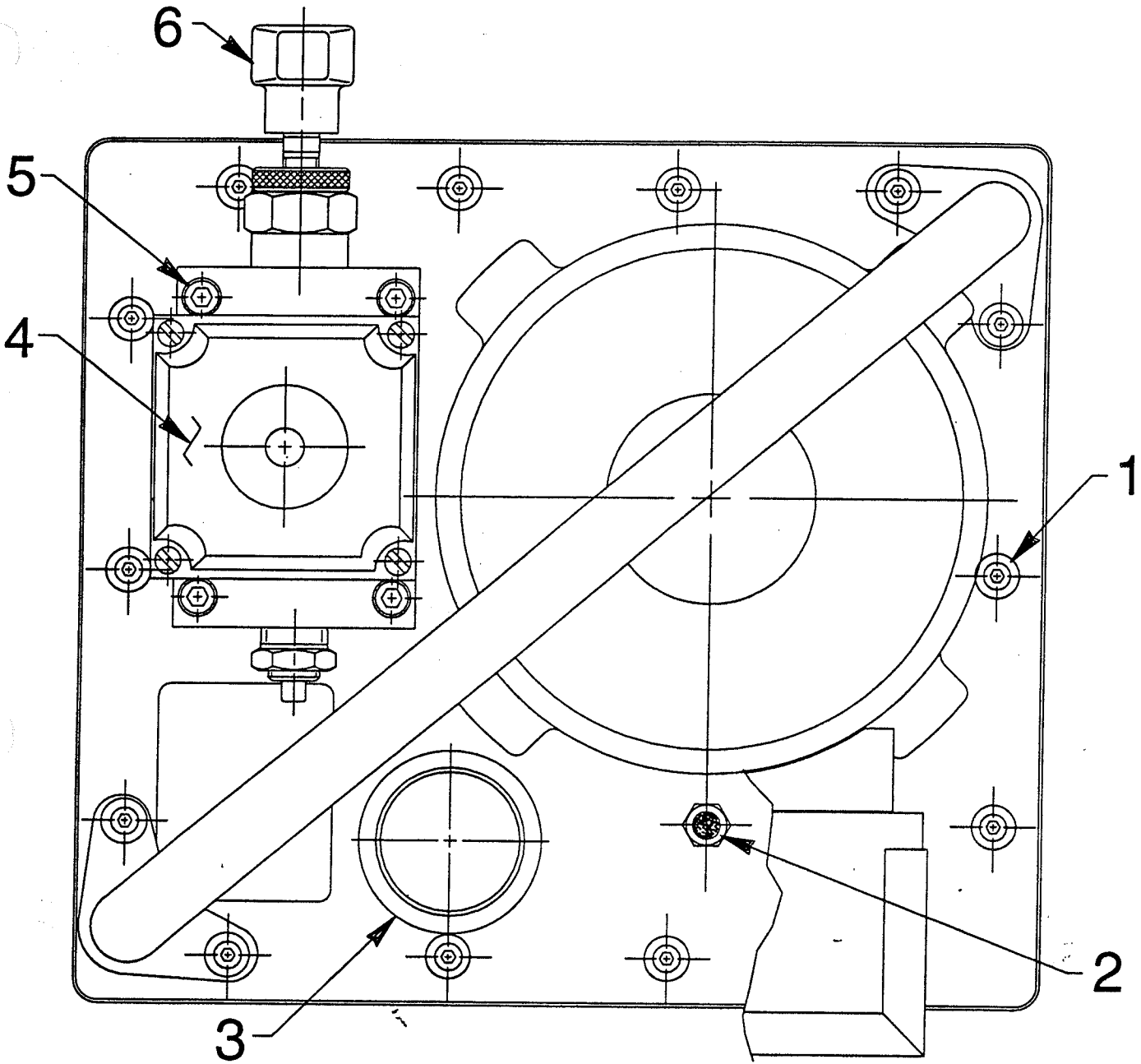
HIGH PRESSURE PUMP ASSEMBLY



Item No.	Part No.	No. Req'd	Description
1	10268	4	O-ring (1/2 X 3/8 X 1/16)
2	11863	2	Backup Washer (1/2 X 3/8 X 1/16)
3	10445	3	Compression Spring (5/32 O.D. X 3/4 Lg.)
4	15130	1	Plug (1/16 NPTF)
5	251601	1	Outlet Ball Stop
6	10444	1	Compression Spring (3/16 I.D. X 13/32 Lg.)
7	209797	1	Hollow Lock Screw (7/16-20 UNF-3A; Torque to 120 in. lbs.)
8	12223	4	Ball (3/16 Dia.)
9	10442	1	Washer (3/8 X 1/4 X 1/32)
10	10374	1	Steel Ball (7/32 Dia.)
11	200796	1	Adapter
12	15691	1	Compression Spring (1/4 O.D. X 5/8 Lg.)

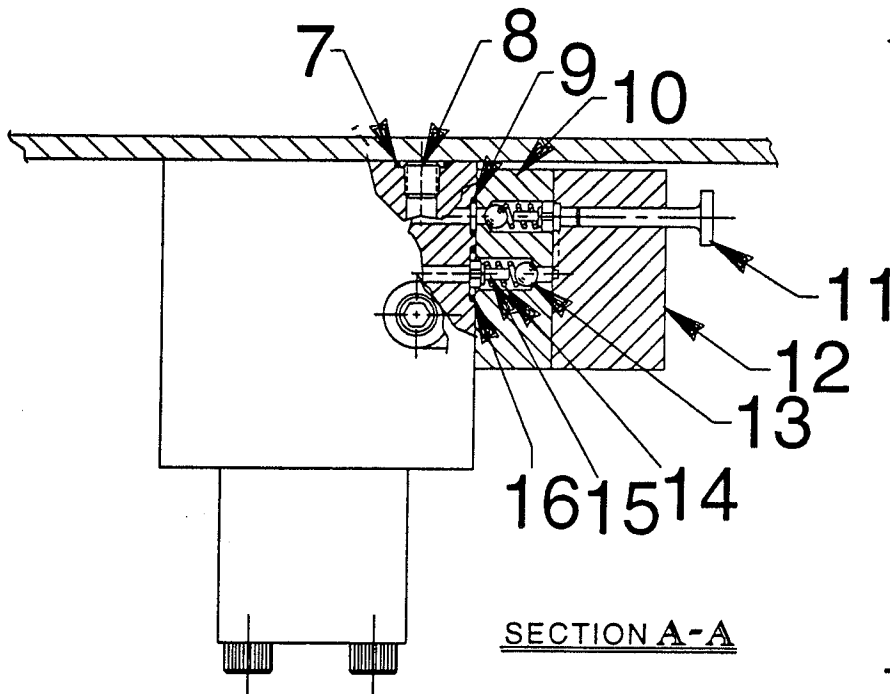
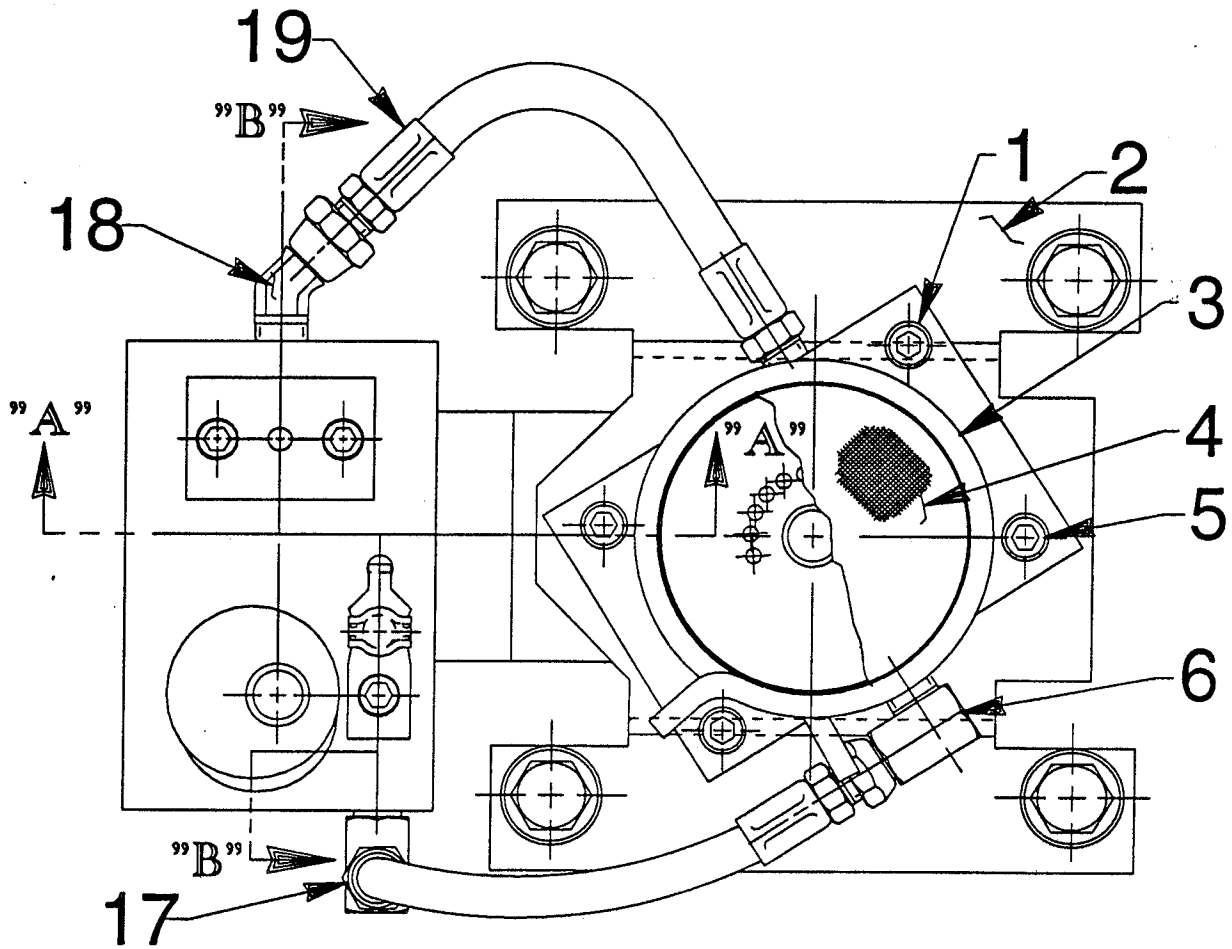
Item No.	Part No.	No. Req'd	Description
13	350577	1	Spring Retainer
14	10002	1	Cap Screw (1/4-20 UNC X 3/8 Lg.; Torque to 70 in. lbs.)
15	251067	1	Set Screw (Unloading valve; #10-24 UNC x 1" Lg.)
16	14484	1	Compression Spring (3/8 O.D. X 1" Lg.)
17	10854	2	Cap Screw (1/4-20UNC X 1-3/4" Lg.; Torque to 70 in. lbs.)
18	207405	1	Locknut (10-24 UNC)
19	251065	2	Replaceable Seat
20	251611	1	Dowel Pin (1/2 x 3/8 x .049)
21	251068	1	Guide
22	17797	1	O-ring (1/4 X 1/8 X 1/16)
23	214992	1	Backup Ring (15/64 x 1/8 x 3/64)
24	209787	1	Replaceable Seat
25	16471	1	Dowel Pin (1/8 dia. x 1" Lg.)
26	251581	1	Bushing

TOP VIEW



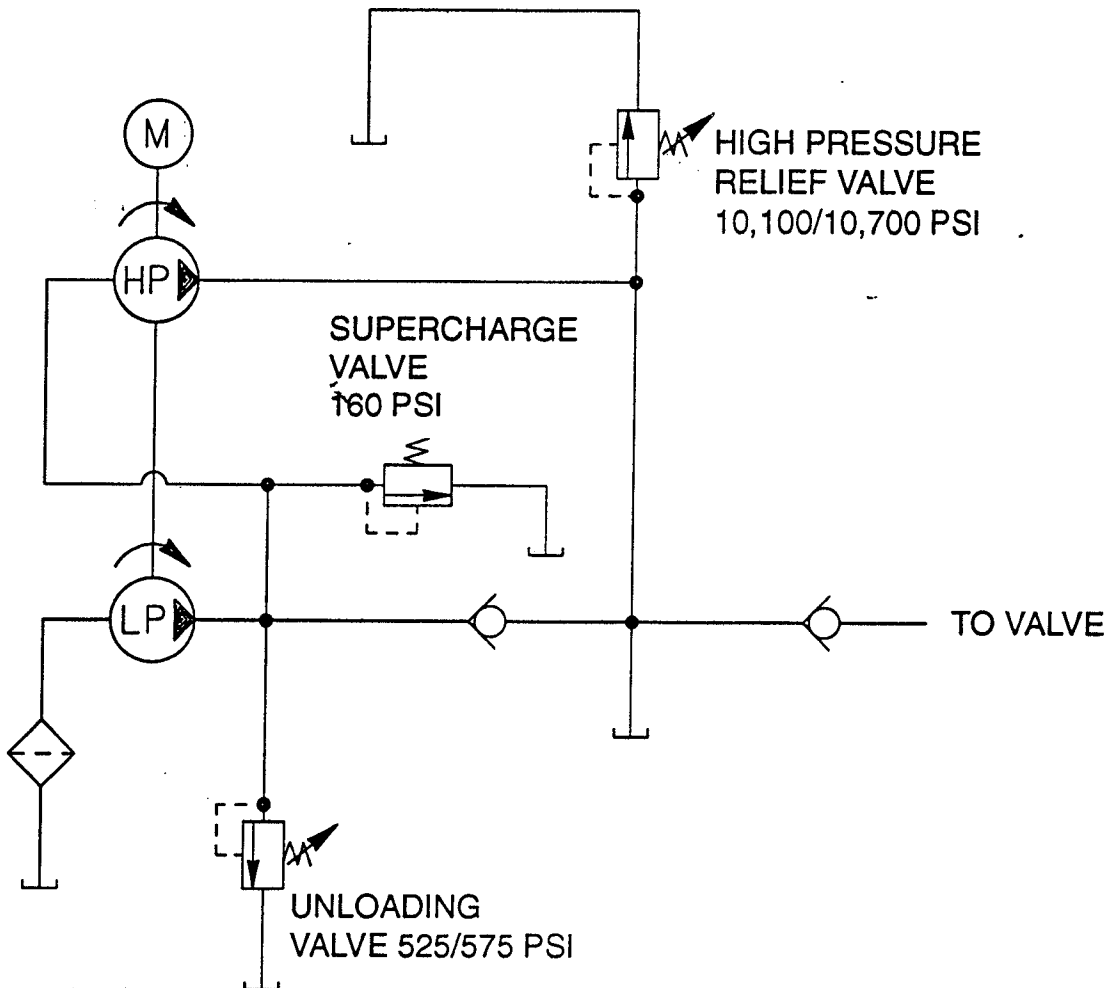
Item No.	Part No.	No. Req'd	Description
1	15911	14	Cap Screw (1/4-20 X 5/8 Lg.; Torque to 70 in. lbs.)
2	251599	1	Breather/Filter Vent
3	350925	1	Filler Cap
4	42621	1	Solenoid Valve (For SST-302S; See Form No. 107269)
	42621-90	1	Solenoid Valve (For YE100; See Form No. 107269)
	44080	1	Solenoid Valve (For YE230; See Form No. 107269)
5	251713	4	Cap Screw
6	420981	1	Regulator Assembly (See Form No. 107271)

BOTTOM VIEW AND SECTION A-A



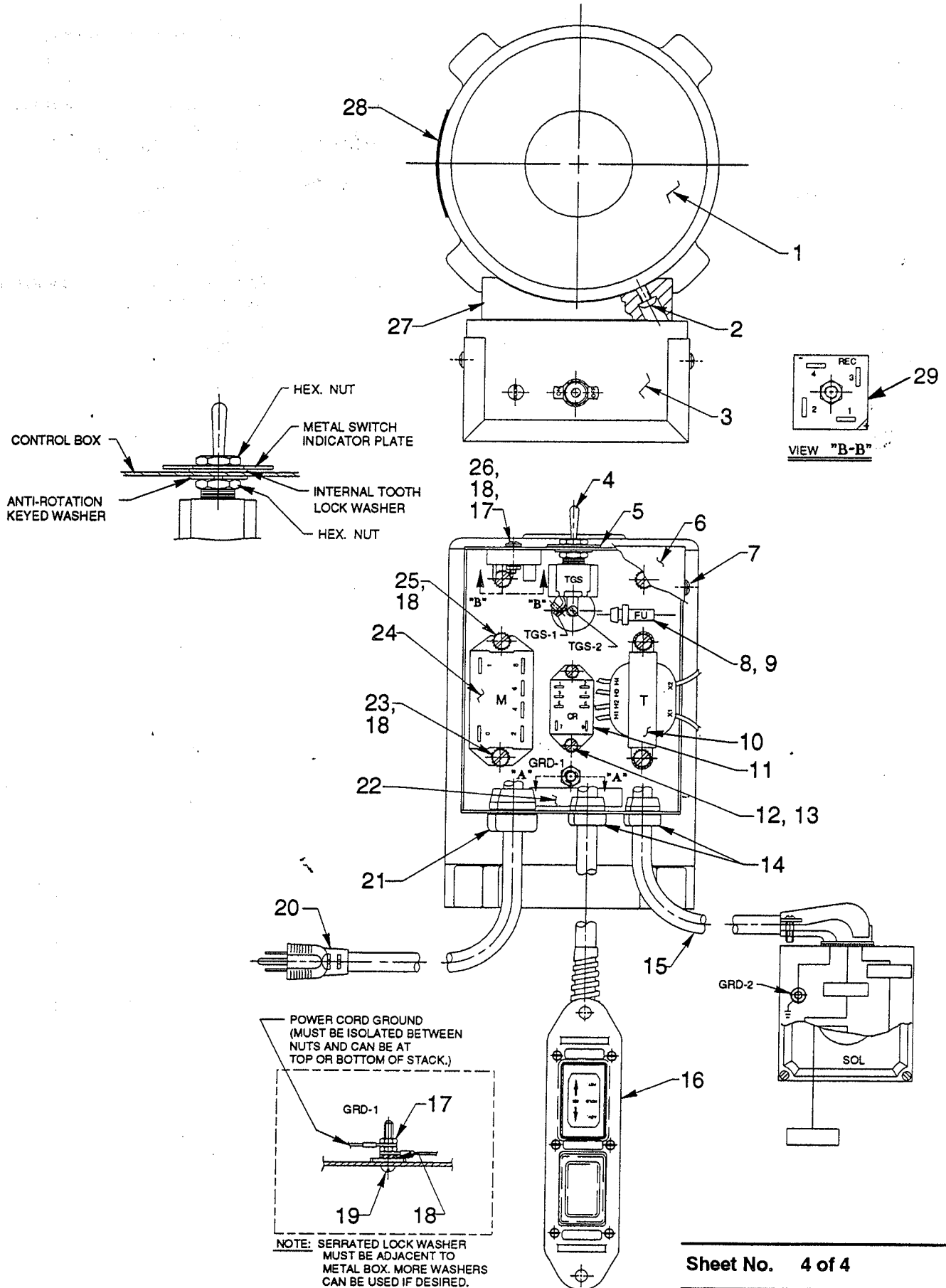
Item No.	Part No.	No. Req'd	Description
1	10022	6	Cap Screw (1/4-20 UNC X 1-1/2" Lg.; Torque to 70 in. lbs.)
2	58481	1	Gerotor Housing Bracket
3	11461	1	Hose Clamp
4	21608	1	Filter
5	10890	2	Cap Screw (1/4-20 X 2" Lg.; Torque to 70 in. lbs.)
6	14440	1	90° Elbow Fitting
7	15279	1	O-ring (1/2 X 3/8 X 1/16)
8	15130	1	Plug
9	10265	1	O-ring (5/16 X 3/16 X 1/16)
10	45559	1	Block
11	305526	1	High Pressure Piston
12	45866	1	Block
13	12223	1	Ball (3/16 Dia.)
14	10445	1	Compression Spring (5/32 O.D. X 3/4 Lg.)
15	24549	2	Ball Guide
16	14763	1	O-ring (7/16 X 5/16 X 1/16)
17	13229	1	Street Elbow
18	251800	1	Elbow Fitting
19	304819	2	Hose Assembly

HYDRAULIC SCHEMATIC



MOTOR & CONTROL ASSEMBLY

115/230 V., 50/60 Hz



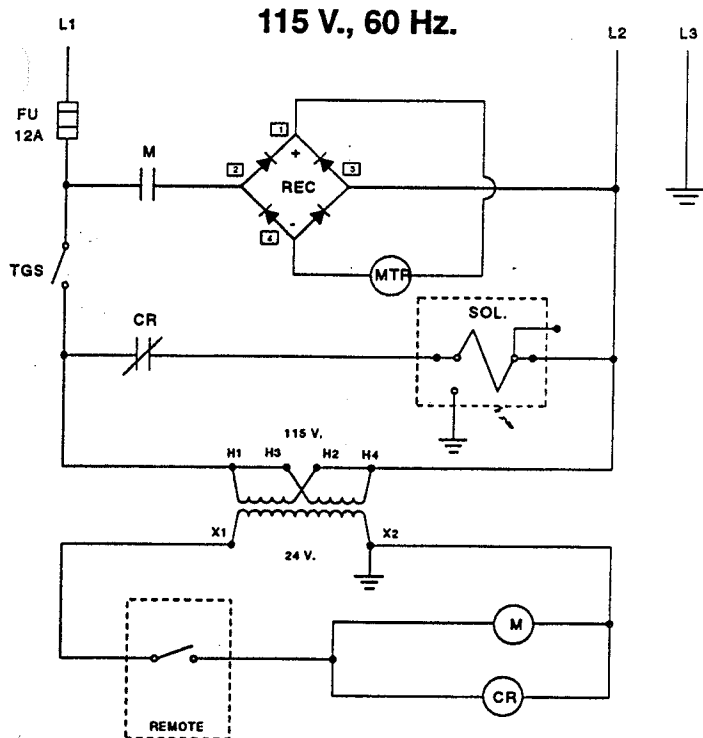
Item No.	Part No.	No. Req'd	Description
1	420838BK2	1	Electric Motor (115 V.)
2	12316	2	Screw
3	58558BK2	1	Electrical Control Box
4	12301	1	Toggle Switch
5	13890	1	Indicator Plate
6	42576BK2	1	Control Box Cover
7	11141	4	Screw (#6-20 X 3/8 Lg.)
8	251619	1	Fuse (12 AMP; For SST302S & YE100)
	250176	2	Fuse (6.25 AMP; For YE230)
9	16887	1	Fuse Holder
10	251049	1	Transformer
11	251046	1	Relay
12	10159	2	Machine Screw
13	15906	2	Lockwasher
14	15993	2	Strain Relief Bushing
15	12293	2.5 ft.	Electrical Cable (16/3 SJTO)
16	25017	1	Hand Switch Assembly

Item No.	Part No.	No. Req'd	Description
17	10197	3	Nut (#10-24 UNC)
18	11108	8	Lockwasher (#10 External Tooth)
19	11856	1	Machine Screw (#10-24 X 1" Lg.)
20	25229	1	Cord Set (14/3 SJTO; For SST-230S)
	308752	8 ft.	Elec. Cable (14/3 SJTO; For YE100 & YE230)
21	210112	1	Strain Relief Bushing
22	205189	1	Ground Decal
23	10164	2	Slotted Screw (#10-24 UNC X 3/8 Lg.)
24	251638	1	Relay
25	12909	4	Machine Screw
26	10167	1	Machine Screw (10-24UNC x 3/4 lg.)
27	420962	1	Mounting Adapter
28	200188	1	Decal
29	251050	1	Rectifier

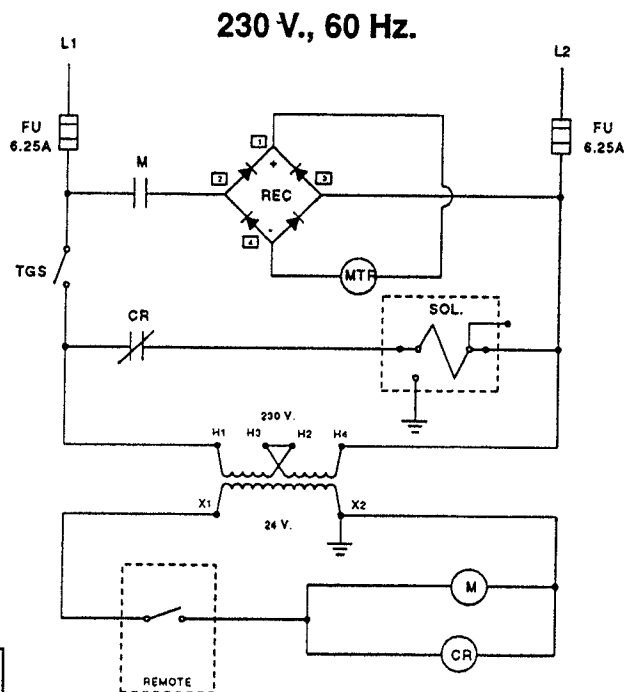
* NOTE: For replacements brushes, order (2) #252958.

ELECTRICAL SCHEMATICS

WARNING: To help avoid personal injury, all electrical work must be done by a qualified electrician.



For 50 Hz. operation connect yellow lead to line voltage and cap red lead.



Note: Shaded areas reflect last revision(s) made to this form.